

For Research Use Only

# XRCC1 Polyclonal antibody

Catalog Number: 21468-1-AP

Featured Product

10 Publications



## Basic Information

**Catalog Number:**

21468-1-AP

**Size:**

150ul, Concentration: 350 µg/ml by Nanodrop and 267 µg/ml by Bradford method using BSA as the standard;

**Source:**

Rabbit

**Isotype:**

IgG

**Immunogen Catalog Number:**

AG15172

**GenBank Accession Number:**

BC023593

**GeneID (NCBI):**

7515

**UNIPROT ID:**

P18887

**Full Name:**

X-ray repair complementing defective repair in Chinese hamster cells 1

**Calculated MW:**

633 aa, 70 kDa

**Observed MW:**

80-90 kDa

**Purification Method:**

Antigen affinity purification

**Recommended Dilutions:**

WB 1:2000-1:12000

IF 1:50-1:500

## Applications

**Tested Applications:**

WB, IF, ELISA

**Cited Applications:**

WB, IHC

**Species Specificity:**

human, mouse

**Cited Species:**

human, mouse

**Positive Controls:**

WB : HEK-293 cells, Jurkat cells, K-562 cells, HeLa cells

IF : HeLa cells,

## Notable Publications

Author	Pubmed ID	Journal	Application
Mingming Yang	35648484	Nucleic Acids Res	WB
Hui Dong	25818601	Toxicol Appl Pharmacol	WB
Xingjie Gao	31338966	J Cell Mol Med	WB

## Storage

**Storage:**

Store at -20°C. Stable for one year after shipment.

**Storage Buffer:**

PBS with 0.02% sodium azide and 50% glycerol pH 7.3.

Aliquoting is unnecessary for -20°C storage

\*\*\* 20ul sizes contain 0.1% BSA

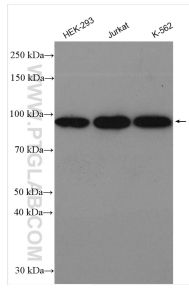
For technical support and original validation data for this product please contact:

T: 1 (888) 4PTGLAB (1-888-478-4522) (toll free in USA), or 1(312) 455-8498 (outside USA)

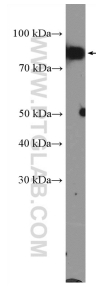
E: [proteintech@ptglab.com](mailto:proteintech@ptglab.com)  
W: [ptglab.com](http://ptglab.com)

This product is exclusively available under Proteintech Group brand and is not available to purchase from any other manufacturer.

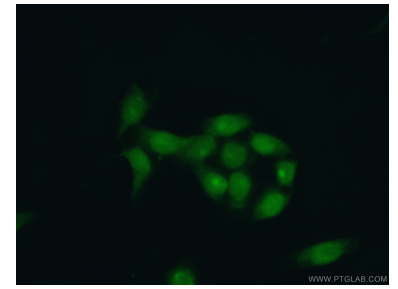
## Selected Validation Data



Various lysates were subjected to SDS PAGE followed by western blot with 21468-1-AP (XRCC1 antibody) at dilution of 1:6000 incubated at room temperature for 1.5 hours.



K-562 cells were subjected to SDS PAGE followed by western blot with 21468-1-AP (XRCC1 Antibody) at dilution of 1:600 incubated at room temperature for 1.5 hours.



Immunofluorescent analysis of (4% PFA) fixed HeLa cells using 21468-1-AP (XRCC1 antibody) at dilution of 1:50 and Alexa Fluor 488-conjugated AffiniPure Goat Anti-Rabbit IgG(H+L).