

For Research Use Only

PLP2 Polyclonal antibody

Catalog Number: 21482-1-AP

Featured Product

2 Publications



Basic Information

Catalog Number: 21482-1-AP	GenBank Accession Number: BC109066	Purification Method: Antigen affinity purification
Size: 150ul, Concentration: 700 µg/ml by Nanodrop and 333 µg/ml by Bradford method using BSA as the standard;	GeneID (NCBI): 5355	Recommended Dilutions: WB 1:500-1:1000 IHC 1:20-1:200 IF 1:50-1:500
Source: Rabbit	Full Name: proteolipid protein 2 (colonic epithelium-enriched)	
Isotype: IgG	Calculated MW: 152 aa, 17 kDa	
Immunogen Catalog Number: AG15740	Observed MW: 15-17 kDa	

Applications

Tested Applications: IF, IHC, WB, ELISA	Positive Controls: WB : SMMC-7721 cells, HEK-293 cells, COLO 320 cells
Cited Applications: IHC, WB	IHC : human colon tissue,
Species Specificity: human	IF : HepG2 cells,
Cited Species: human	

Note-IHC: suggested antigen retrieval with TE buffer pH 9.0; (*) Alternatively, antigen retrieval may be performed with citrate buffer pH 6.0

Background Information

Notable Publications

Author	Pubmed ID	Journal	Application
Xiaojian Li	31535380	J Cell Physiol	WB
Hua Bai	32596309	Biomed Res Int	IHC

Storage

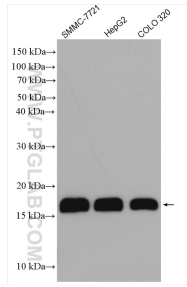
Storage:
Store at -20°C. Stable for one year after shipment.
Storage Buffer:
PBS with 0.02% sodium azide and 50% glycerol pH 7.3.
Aliquoting is unnecessary for -20°C storage

*** 20ul sizes contain 0.1% BSA

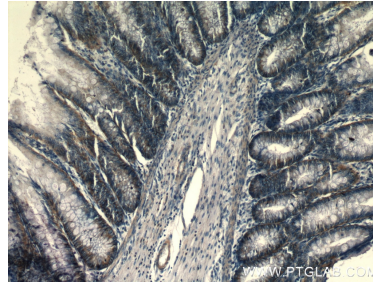
For technical support and original validation data for this product please contact:
T: 1 (888) 4PTGLAB (1-888-478-4522) (toll free in USA), or 1(312) 455-8498 (outside USA)
E: proteintech@ptglab.com
W: ptglab.com

This product is exclusively available under Proteintech Group brand and is not available to purchase from any other manufacturer.

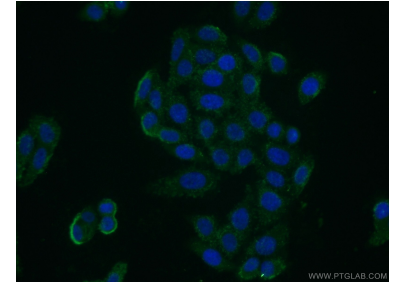
Selected Validation Data



Various lysates were subjected to SDS PAGE followed by western blot with 21482-1-AP (PLP2) antibody at dilution of 1:800 incubated at room temperature for 1.5 hours.



Immunohistochemical analysis of paraffin-embedded human colon using 21482-1-AP (PLP2) antibody at dilution of 1:50 (under 10x lens).



Immunofluorescent analysis of (-20°C Ethanol) fixed HepG2 cells using 21482-1-AP (PLP2) antibody at dilution of 1:50 and Alexa Fluor 488-conjugated AffiniPure Goat Anti-Rabbit IgG(H+L).