

For Research Use Only

# VANGL2 Polyclonal antibody, PBS Only

Catalog Number: 21492-1-PBS

Featured Product



## Basic Information

**Catalog Number:**

21492-1-PBS

**Size:**

100ug, Concentration: 1 mg/ml by Nanodrop;

**Source:**

Rabbit

**Isotype:**

IgG

**Immunogen Catalog Number:**

AG15833

**GenBank Accession Number:**

BC103920

**GeneID (NCBI):**

57216

**UNIPROT ID:**

Q9ULK5

**Full Name:**

vang-like 2 (van gogh, Drosophila)

**Calculated MW:**

521 aa, 60 kDa

**Observed MW:**

60-70 kDa

**Purification Method:**

Antigen affinity purification

## Applications

**Tested Applications:**

WB, IHC, IF/ICC, IP, Indirect ELISA

**Species Specificity:**

human, mouse, rat

## Background Information

Vangl2 is a key component of the planar cell polarity (PCP) pathway. Vangl2 is tightly associated with the postsynaptic density (PSD) fraction and forms a protein complex with PSD-95 and NMDA receptors. Vangl2 directly binds to the third PDZ domain of PSD-95 via its C-terminal TSV motif. Vangl2 directly binds to N-cadherin.

## Storage

**Storage:**

Store at -80°C.

**Storage Buffer:**

PBS only, pH7.3

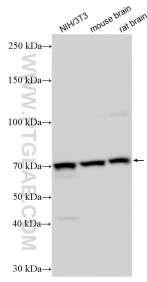
For technical support and original validation data for this product please contact:

T: 1 (888) 4PTGLAB (1-888-478-4522) (toll free in USA), or 1(312) 455-8498 (outside USA)

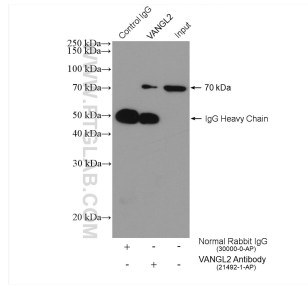
E: [proteintech@ptglab.com](mailto:proteintech@ptglab.com)  
W: [ptglab.com](http://ptglab.com)

This product is exclusively available under Proteintech Group brand and is not available to purchase from any other manufacturer.

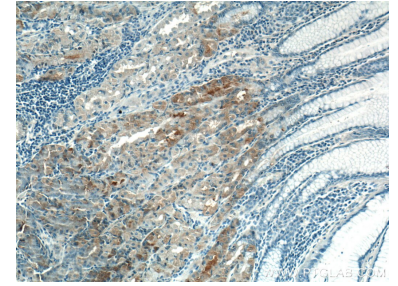
## Selected Validation Data



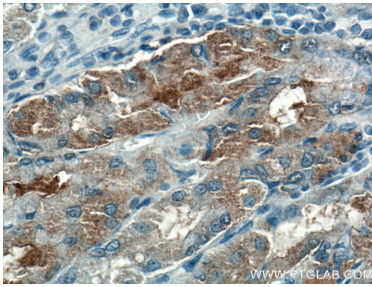
Various lysates were subjected to SDS PAGE followed by western blot with 21492-1-AP (VANGL2 antibody) at dilution of 1:3000 incubated at room temperature for 1.5 hours. This data was developed using the same antibody clone with 21492-1-PBS in a different storage buffer formulation.



IP result of anti-VANGL2 (IP:21492-1-AP, 4ug; Detection:21492-1-AP 1:500) with HepG2 cells lysate 1880 ug. This data was developed using the same antibody clone with 21492-1-PBS in a different storage buffer formulation.



Immunohistochemical analysis of paraffin-embedded human stomach tissue slide using 21492-1-AP (VANGL2 antibody) at dilution of 1:200 (under 10x lens). This data was developed using the same antibody clone with 21492-1-PBS in a different storage buffer formulation.



Immunohistochemical analysis of paraffin-embedded human stomach tissue slide using 21492-1-AP (VANGL2 antibody) at dilution of 1:200 (under 40x lens). This data was developed using the same antibody clone with 21492-1-PBS in a different storage buffer formulation.