

For Research Use Only

NEBL Polyclonal antibody

Catalog Number: 21497-1-AP



Basic Information

Catalog Number: 21497-1-AP	GenBank Accession Number: BC110453	Purification Method: Antigen affinity purification
Size: 150ul , Concentration: 250 ug/ml by Nanodrop and 173 ug/ml by Bradford method using BSA as the standard;	GeneID (NCBI): 10529	Recommended Dilutions: WB 1:20000-1:100000
Source: Rabbit	UNIPROT ID: O76041	IHC 1:500-1:2000
Isotype: IgG	Full Name: nebulette	IF-P 1:300-1:1200
Immunogen Catalog Number: AG15882	Calculated MW: 1014 aa, 116 kDa	
	Observed MW: 116 kDa	

Applications

Tested Applications: WB, IHC, IF-P, ELISA	Positive Controls:
Species Specificity: human, mouse, rat	WB : mouse heart tissue, rat heart tissue
Note-IHC: suggested antigen retrieval with TE buffer pH 9.0; (*) Alternatively, antigen retrieval may be performed with citrate buffer pH 6.0	IHC : mouse heart tissue,
	IF-P : mouse heart tissue,

Background Information

Nebulette, also known as NEBL, is a cardiac-specific isoform belonging to the nebulin family of proteins. Nebulette has 23 modular repeat structures of 35 amino acid residues each. Nebulette has an acidic region with unknown structure at its N-terminus, and a serine-rich region adjacent to an SH3 domain at its C-terminus (PMID: 2037050, 20951588). Nebulette functionally links sarcomeric actin to the desmin intermediate filaments in the heart muscle sarcomeres (PubMed:27733623). Nebulette is abundantly expressed in cardiac muscle at Z-disc regions, but not in skeletal or smooth muscle.

Storage

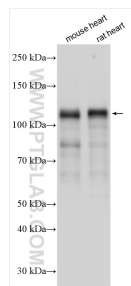
Storage:
Store at -20°C. Stable for one year after shipment.
Storage Buffer:
PBS with 0.02% sodium azide and 50% glycerol pH 7.3.
Aliquoting is unnecessary for -20°C storage

*** 20ul sizes contain 0.1% BSA

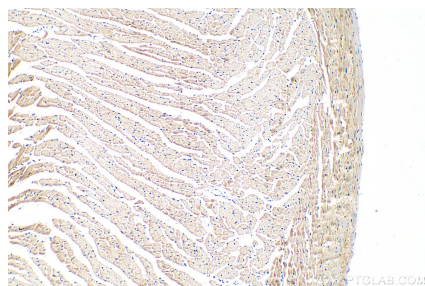
For technical support and original validation data for this product please contact:
T: 1 (888) 4PTGLAB (1-888-478-4522) (toll free in USA), or 1(312) 455-8498 (outside USA)
E: proteintech@ptglab.com
W: ptglab.com

This product is exclusively available under Proteintech Group brand and is not available to purchase from any other manufacturer.

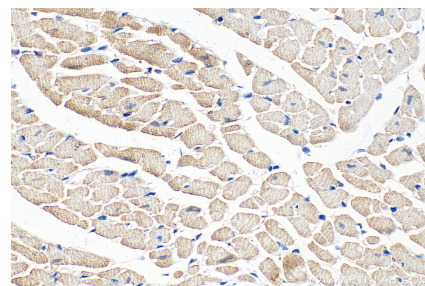
Selected Validation Data



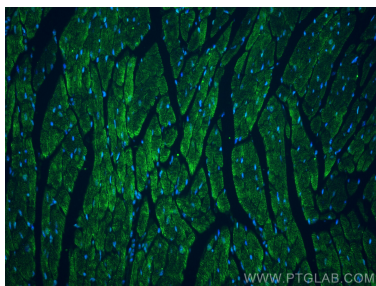
Various lysates were subjected to SDS PAGE followed by western blot with 21497-1-AP (NEBL antibody) at dilution of 1:60000 incubated at room temperature for 1.5 hours.



Immunohistochemical analysis of paraffin-embedded mouse heart tissue slide using 21497-1-AP (NEBL antibody) at dilution of 1:1000 (under 10x lens). Heat mediated antigen retrieval with Tris-EDTA buffer (pH 9.0).



Immunohistochemical analysis of paraffin-embedded mouse heart tissue slide using 21497-1-AP (NEBL antibody) at dilution of 1:1000 (under 40x lens). Heat mediated antigen retrieval with Tris-EDTA buffer (pH 9.0).



Immunofluorescent analysis of (4% PFA) fixed paraffin-embedded mouse heart tissue using NEBL antibody (21497-1-AP) at dilution of 1:600 and Multi-rAb CoraLite ® Plus 488-Goat Anti-Rabbit Recombinant Secondary Antibody (H+L) (RGAR002). Heat mediated antigen retrieval with Tris-EDTA buffer (pH 9.0).