

For Research Use Only

# NEBL Polyclonal antibody, PBS Only

Catalog Number: 21497-1-PBS



## Basic Information

### Catalog Number:

21497-1-PBS

### Size:

100ug, Concentration: 1 mg/ml by Nanodrop;

### Source:

Rabbit

### Isotype:

IgG

### Immunogen Catalog Number:

AG15882

### GenBank Accession Number:

BC110453

### GeneID (NCBI):

10529

### UNIPROT ID:

O76041

### Full Name:

nebulette

### Calculated MW:

1014 aa, 116 kDa

### Observed MW:

116 kDa

### Purification Method:

Antigen affinity purification

## Applications

### Tested Applications:

WB, IHC, IF-P, Indirect ELISA

### Species Specificity:

human, mouse, rat

## Background Information

Nebulette, also known as NEBL, is a cardiac-specific isoform belonging to the nebulin family of proteins. Nebulette has 23 modular repeat structures of 35 amino acid residues each. Nebulette has an acidic region with unknown structure at its N-terminus, and a serine-rich region adjacent to an SH3 domain at its C-terminus (PMID: 2037050, 20951588). Nebulette functionally links sarcomeric actin to the desmin intermediate filaments in the heart muscle sarcomeres (PubMed:27733623). Nebulette is abundantly expressed in cardiac muscle at Z-disc regions, but not in skeletal or smooth muscle.

## Storage

### Storage:

Store at -80°C.

### Storage Buffer:

PBS Only

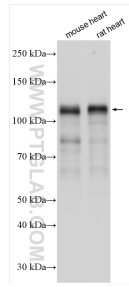
For technical support and original validation data for this product please contact:

T: 1 (888) 4PTGLAB (1-888-478-4522) (toll free in USA), or 1(312) 455-8498 (outside USA)

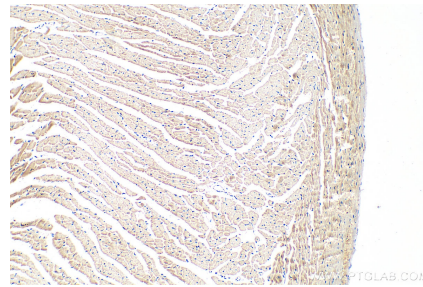
E: [proteintech@ptglab.com](mailto:proteintech@ptglab.com)  
W: [ptglab.com](http://ptglab.com)

This product is exclusively available under Proteintech Group brand and is not available to purchase from any other manufacturer.

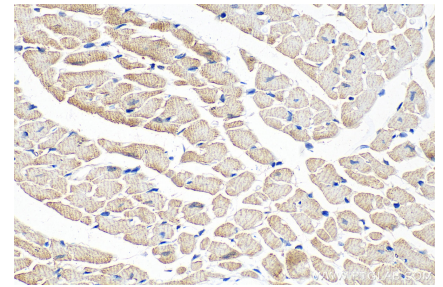
## Selected Validation Data



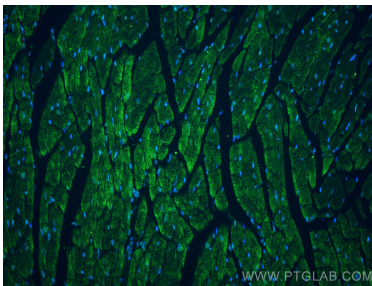
Various lysates were subjected to SDS PAGE followed by western blot with 21497-1-AP (NEBL antibody) at dilution of 1:60000 incubated at room temperature for 1.5 hours. This data was developed using the same antibody clone with 21497-1-PBS in a different storage buffer formulation.



Immunohistochemical analysis of paraffin-embedded mouse heart tissue slide using 21497-1-AP (NEBL antibody) at dilution of 1:1000 (under 10x lens). Heat mediated antigen retrieval with Tris-EDTA buffer (pH 9.0). This data was developed using the same antibody clone with 21497-1-PBS in a different storage buffer formulation.



Immunohistochemical analysis of paraffin-embedded mouse heart tissue slide using 21497-1-AP (NEBL antibody) at dilution of 1:1000 (under 40x lens). Heat mediated antigen retrieval with Tris-EDTA buffer (pH 9.0). This data was developed using the same antibody clone with 21497-1-PBS in a different storage buffer formulation.



Immunofluorescent analysis of (4% PFA) fixed paraffin-embedded mouse heart tissue using NEBL antibody (21497-1-AP) at dilution of 1:600 and Multi-rAb CoraLite ® Plus 488-Goat Anti-Rabbit Recombinant Secondary Antibody (H+L) (RGAR002). Heat mediated antigen retrieval with Tris-EDTA buffer (pH 9.0). This data was developed using the same antibody clone with 21497-1-PBS in a different storage buffer formulation.