

For Research Use Only

Arp5/ACTR5 Polyclonal antibody, PBS Only

Catalog Number: 21505-1-PBS

Featured Product



Basic Information

Catalog Number:

21505-1-PBS

Size:

100ug, Concentration: 1 mg/ml by Nanodrop;

Source:

Rabbit

Isotype:

IgG

Immunogen Catalog Number:

AG15976

GenBank Accession Number:

BC038402

GeneID (NCBI):

79913

UNIPROT ID:

Q9H9F9

Full Name:

ARP5 actin-related protein 5 homolog (yeast)

Calculated MW:

607 aa, 68 kDa

Observed MW:

68 kDa

Purification Method:

Antigen affinity purification

Applications

Tested Applications:

WB, IHC, IF/ICC, IP, Indirect ELISA

Species Specificity:

human, mouse, rat

Background Information

Arp5 is a member of nuclear actin-related proteins (ARPs) that function as components of the chromatin-remodeling complex. Recently study reported that Arp5 regulates smooth muscle cell differentiation through interaction with myocardin (Myocd). Arp5 has been identified as negative regulator of Myocd, suppressing Myocd activity in the nucleus through tightly binding with Myocd RPEL motifs. Alternative splicing results in two variants of Arp5: a broadly expressed arp5-common, and a smooth muscle restricted arp5-sm. Expression of Arp5-sm protein is strongly suppressed in well-differentiated smooth muscle cells by partial messenger RNA decay and translational suppression. (24567363)

Storage

Storage:

Store at -80°C.

Storage Buffer:

PBS only, pH7.3

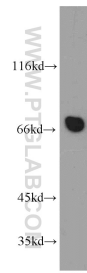
For technical support and original validation data for this product please contact:

T: 1 (888) 4PTGLAB (1-888-478-4522) (toll free in USA), or 1(312) 455-8498 (outside USA)

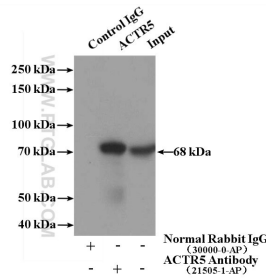
E: proteintech@ptglab.com
W: ptglab.com

This product is exclusively available under Proteintech Group brand and is not available to purchase from any other manufacturer.

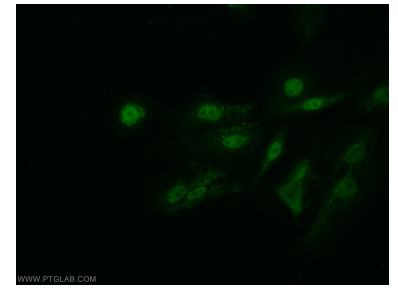
Selected Validation Data



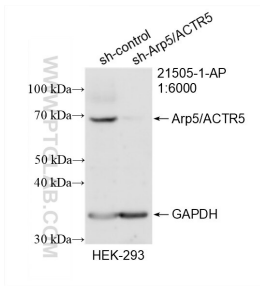
mouse cerebellum tissue were subjected to SDS PAGE followed by western blot with 21505-1-AP (Arp5/ACTR5 antibody) at dilution of 1:500 incubated at room temperature for 1.5 hours. This data was developed using the same antibody clone with 21505-1-PBS in a different storage buffer formulation.



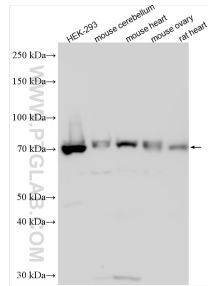
IP result of anti-Arp5/ACTR5 (IP:21505-1-AP, 4ug; Detection:21505-1-AP 1:500) with HEK-293 cells lysate 1120ug. This data was developed using the same antibody clone with 21505-1-PBS in a different storage buffer formulation.



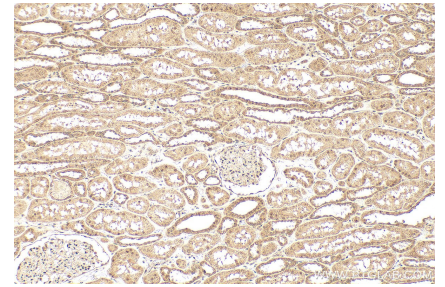
Immunofluorescent analysis of A549 cells using 21505-1-AP (Arp5/ACTR5 antibody) at dilution of 1:25 and Alexa Fluor 488-conjugated AffiniPure Goat Anti-Rabbit IgG(H+L). This data was developed using the same antibody clone with 21505-1-PBS in a different storage buffer formulation.



WB result of Arp5/ACTR5 antibody (21505-1-AP; 1:6000; incubated at room temperature for 1.5 hours) with sh-Control and sh-Arp5/ACTR5 transfected HEK-293 cells. This data was developed using the same antibody clone with 21505-1-PBS in a different storage buffer formulation.



Various lysates were subjected to SDS PAGE followed by western blot with 21505-1-AP (Arp5/ACTR5 antibody) at dilution of 1:3000 incubated at room temperature for 1.5 hours. This data was developed using the same antibody clone with 21505-1-PBS in a different storage buffer formulation.



Immunohistochemical analysis of paraffin-embedded human kidney tissue slide using 21505-1-AP (Arp5/ACTR5 antibody) at dilution of 1:200 (under 10x lens). Heat mediated antigen retrieval with Tris-EDTA buffer (pH 9.0). This data was developed using the same antibody clone with 21505-1-PBS in a different storage buffer formulation.