

For Research Use Only

# LHX6 Polyclonal antibody

Catalog Number: 21516-1-AP

Featured Product

2 Publications



## Basic Information

<b>Catalog Number:</b> 21516-1-AP	<b>GenBank Accession Number:</b> BC103937	<b>Purification Method:</b> Antigen affinity purification
<b>Size:</b> 150ul , Concentration: 227 µg/ml by Bradford method using BSA as the standard;	<b>GeneID (NCBI):</b> 26468	<b>Recommended Dilutions:</b> WB 1:200-1:1000
<b>Source:</b> Rabbit	<b>Full Name:</b> LIM homeobox 6	
<b>Isotype:</b> IgG	<b>Calculated MW:</b> 392 aa, 43 kDa	
<b>Immunogen Catalog Number:</b> AG16047	<b>Observed MW:</b> 50-60 kDa	

## Applications

<b>Tested Applications:</b> WB, ELISA	<b>Positive Controls:</b> WB : HepG2 cells,
<b>Cited Applications:</b> WB	
<b>Species Specificity:</b> human	
<b>Cited Species:</b> human	

## Background Information

LHX6 is a LIM homeodomain protein similar in structure to ISL-1. LHX6, like ISL-1, contains tandem LIM domains and a homeodomain that regulate its activity both in cis and through interaction with cell-specific factors. LHX6 is highly expressed in the neural crest-derived mesenchyme throughout odontogenesis and down-regulated after birth. However, LHX6 is also expressed in the palate epithelium, oral epithelium, and dental epithelium during craniofacial development. LHX6 regulates migration and specification of neuron subtypes and marks specific neurons. The molecular weight of Endogenous LHX6 is 40 kDa, but the LHX6PITX2 protein complex is 56 kDa (PMID: 23229549).

## Notable Publications

Author	Pubmed ID	Journal	Application
You Yu	31562861	Exp Cell Res	WB
Shuang Shi	34729246	Mol Ther Nucleic Acids	WB

## Storage

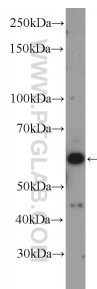
**Storage:**  
Store at -20°C. Stable for one year after shipment.  
**Storage Buffer:**  
PBS with 0.02% sodium azide and 50% glycerol pH 7.3.  
Aliquoting is unnecessary for -20°C storage

\*\*\* 20ul sizes contain 0.1% BSA

For technical support and original validation data for this product please contact:  
T: 1 (888) 4PTGLAB (1-888-478-4522) (toll free in USA), or 1(312) 455-8498 (outside USA)  
E: proteintech@ptglab.com  
W: ptglab.com

This product is exclusively available under Proteintech Group brand and is not available to purchase from any other manufacturer.

# Selected Validation Data



HepG2 cells were subjected to SDS PAGE followed by western blot with 21516-1-AP (LHX6 Antibody) at dilution of 1:300 incubated at room temperature for 1.5 hours.