

For Research Use Only

LHX6 Polyclonal antibody, PBS Only

Catalog Number: 21516-1-PBS

Featured Product



Basic Information

Catalog Number:

21516-1-PBS

Size:

100ug, Concentration: 1 mg/ml by Nanodrop;

Source:

Rabbit

Isotype:

IgG

Immunogen Catalog Number:

AG16047

GenBank Accession Number:

BC103937

GeneID (NCBI):

26468

UNIPROT ID:

Q9UPM6

Full Name:

LIM homeobox 6

Calculated MW:

392 aa, 43 kDa

Observed MW:

40 kDa

Purification Method:

Antigen affinity purification

Applications

Tested Applications:

WB, Indirect ELISA

Species Specificity:

human

Background Information

LHX6 is a LIM homeodomain protein similar in structure to ISL-1. LHX6, like ISL-1, contains tandem LIM domains and a homeodomain that regulate its activity both in cis and through interaction with cell-specific factors. LHX6 is highly expressed in the neural crest-derived mesenchyme throughout odontogenesis and down-regulated after birth. However, LHX6 is also expressed in the palate, oral, and dental epithelium during craniofacial development. LHX6 regulates the migration and specification of neuron subtypes and marks specific neurons. The molecular weight of Endogenous LHX6 is 40 kDa, but the LHX6-PITX2 protein complex is 56 kDa (PMID: 23229549).

Storage

Storage:

Store at -80°C.

Storage Buffer:

PBS Only

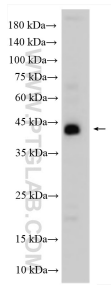
For technical support and original validation data for this product please contact:

T: 1 (888) 4PTGLAB (1-888-478-4522) (toll free in USA), or 1(312) 455-8498 (outside USA)

E: proteintech@ptglab.com
W: ptglab.com

This product is exclusively available under Proteintech Group brand and is not available to purchase from any other manufacturer.

Selected Validation Data



Various lysates were subjected to SDS PAGE followed by western blot with 21516-1-AP (LHX6 antibody) at dilution of 1:1000 incubated at room temperature for 1.5 hours. This data was developed using the same antibody clone with 21516-1-PBS in a different storage buffer formulation.