

For Research Use Only

# Glypican 6 Polyclonal antibody, PBS Only

Catalog Number: 21526-1-PBS



## Basic Information

<b>Catalog Number:</b> 21526-1-PBS	<b>GenBank Accession Number:</b> BC106947	<b>Purification Method:</b> Antigen affinity purification
<b>Size:</b> 100ug, Concentration: 1 mg/ml by Nanodrop;	<b>GeneID (NCBI):</b> 10082	
<b>Source:</b> Rabbit	<b>UNIPROT ID:</b> Q9Y625	
<b>Isotype:</b> IgG	<b>Full Name:</b> glypican 6	
<b>Immunogen Catalog Number:</b> AG16135	<b>Calculated MW:</b> 555 aa, 63 kDa	
	<b>Observed MW:</b> 70 kDa	

## Applications

**Tested Applications:**  
WB, Indirect ELISA

**Species Specificity:**  
human

## Background Information

Glypican-6 (GPC6) is a glycosylphosphatidylinositol-anchored heparan-sulfate proteoglycan that regulates cell-surface signaling cues during development and disease. GPC6 binds Hedgehog ligands and facilitates their interaction with the receptor Patched, thereby amplifying Hh signaling required for long-bone and gastric/intestinal elongation. (PMID: 35235423)

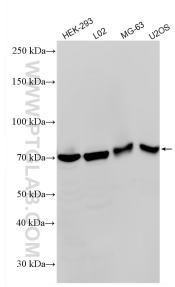
## Storage

**Storage:**  
Store at -80°C.  
**Storage Buffer:**  
PBS only, pH7.3

For technical support and original validation data for this product please contact:  
T: 1 (888) 4PTGLAB (1-888-478-4522) (toll free in USA), or 1(312) 455-8498 (outside USA)      E: proteintech@ptglab.com  
W: ptglab.com

This product is exclusively available under Proteintech Group brand and is not available to purchase from any other manufacturer.

## Selected Validation Data



Various lysates were subjected to SDS PAGE followed by western blot with 21526-1-AP (Glypican 6 antibody) at dilution of 1:1500 incubated at room temperature for 1.5 hours. This data was developed using the same antibody clone with 21526-1-PBS in a different storage buffer formulation.