

For Research Use Only

L1TD1 Polyclonal antibody

Catalog Number: 21528-1-AP



Basic Information

Catalog Number: 21528-1-AP	GenBank Accession Number: BC111559	Purification Method: Antigen affinity purification
Size: 150ul , Concentration: 600 ug/ml by Nanodrop and 380 ug/ml by Bradford method using BSA as the standard;	GeneID (NCBI): 54596	Recommended Dilutions: WB 1:500-1:1000
Source: Rabbit	UNIPROT ID: Q5T7N2	IHC 1:500-1:2000
Isotype: IgG	Full Name: LINE-1 type transposase domain containing 1	IF/ICC 1:50-1:500
Immunogen Catalog Number: AG16147	Calculated MW: 865 aa, 99 kDa	
	Observed MW: 100 kDa	

Applications

Tested Applications: WB, IHC, IF/ICC, ELISA	Positive Controls:
Species Specificity: human	WB : NCCIT cells,
Note-IHC: suggested antigen retrieval with TE buffer pH 9.0; (*) Alternatively, antigen retrieval may be performed with citrate buffer pH 6.0	IHC : human ovary cancer tissue, human ovary tumor tissue, human placenta tissue
	IF/ICC : NCCIT cells,

Background Information

L1TD1 is an RNA-binding protein highly and specifically expressed in pluripotent cells. It is essential for maintaining the pluripotency in human embryonic stem cells (hESCs) and has been considered as a marker for undifferentiated hESCs. L1TD1 is also reported to be highly expressed in medulloblastoma cells and its expression in medulloblastoma correlates with poor clinical outcome.

Storage

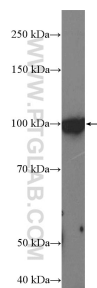
Storage:
Store at -20°C. Stable for one year after shipment.
Storage Buffer:
PBS with 0.02% sodium azide and 50% glycerol pH 7.3.
Aliquoting is unnecessary for -20°C storage

*** 20ul sizes contain 0.1% BSA

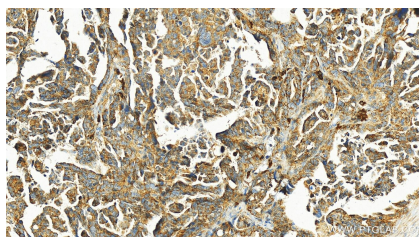
For technical support and original validation data for this product please contact:
T: 1 (888) 4PTGLAB (1-888-478-4522) (toll free in USA), or 1(312) 455-8498 (outside USA)
E: proteintech@ptglab.com
W: ptglab.com

This product is exclusively available under Proteintech Group brand and is not available to purchase from any other manufacturer.

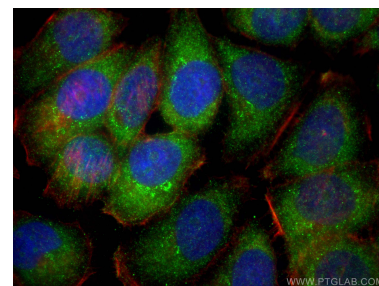
Selected Validation Data



WB result of L1TD1 antibody (21528-1-AP, 1:500) with NCCIT cells.



Immunohistochemical analysis of paraffin-embedded human ovarian cancer slide using 21528-1-AP (L1TD1 antibody) at dilution of 1:1000 (under 20x lens). Heat mediated antigen retrieval with Tris-EDTA buffer (pH 9.0).



Immunofluorescent analysis of (-20°C Ethanol) fixed NCCIT cells using L1TD1 antibody (21528-1-AP) at dilution of 1:200 and Multi-rAb CoraLite® Plus 488-Goat Anti-Rabbit Recombinant Secondary Antibody (H+L) (RGAR002), CL594-phalloidin (red).