

For Research Use Only

MARK1 Polyclonal antibody

Catalog Number: 21552-1-AP

Featured Product

10 Publications



Basic Information

Catalog Number: 21552-1-AP	GenBank Accession Number: BC113869	Purification Method: Antigen affinity purification
Size: 150ul , Concentration: 700 µg/ml by Nanodrop and 360 µg/ml by Bradford method using BSA as the standard;	GeneID (NCBI): 4139	Recommended Dilutions: WB 1:1000-1:6000 IP 0.5-4.0 ug for 1.0-3.0 mg of total protein lysate IHC 1:50-1:500
Source: Rabbit	Full Name: MAP/microtubule affinity-regulating kinase 1	
Isotype: IgG	Calculated MW: 795 aa, 89 kDa	
Immunogen Catalog Number: AG16225	Observed MW: 85-89 kDa, 72 kDa	

Applications

Tested Applications:

IHC, IP, WB, ELISA

Cited Applications:

IP, WB

Species Specificity:

human, mouse, rat

Cited Species:

human, rat, mouse

Note-IHC: suggested antigen retrieval with TE buffer pH 9.0; (*) Alternatively, antigen retrieval may be performed with citrate buffer pH 6.0

Positive Controls:

WB : mouse brain tissue, HeLa cells, SH-SY5Y cells, mouse kidney tissue, rat brain tissue

IP : mouse brain tissue,

IHC : rat testis tissue,

Background Information

MARK1, also named as MAP-microtubule affinity regulating kinase 1, which form a subfamily of the calcium/calmodulin-dependent protein kinase (CAMP) group of kinases (PMID: 22670221). It is involved in cell polarity by phosphorylating the microtubule-associated proteins MAP2, MAP4 and MAPT/TAU at KXGS motifs, causing detachment from microtubules, and their disassembly. MARK1 also act as a regulator of the neuronal migration and Wnt signaling pathway. It has 3 isoforms which molecular weight is 89,84,72 kDa. This antibody may detect all of the isoforms.

Notable Publications

Author	Pubmed ID	Journal	Application
Tsz-Yin Chan	34504101	Nat Commun	IP
Vickie Kwan	27829159	Cell Rep	WB
Victoria L DiBona	34023358	Neurosci Res	WB

Storage

Storage:

Store at -20°C. Stable for one year after shipment.

Storage Buffer:

PBS with 0.02% sodium azide and 50% glycerol pH 7.3.

Aliquoting is unnecessary for -20°C storage

*** 20ul sizes contain 0.1% BSA

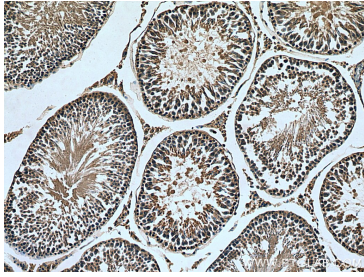
For technical support and original validation data for this product please contact:

T: 1 (888) 4PTGLAB (1-888-478-4522) (toll free in USA), or 1(312) 455-8498 (outside USA)

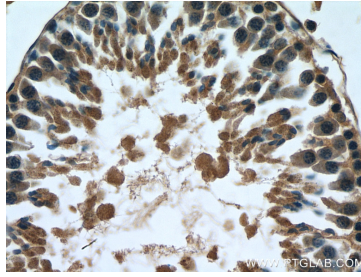
E: proteintech@ptglab.com
W: ptglab.com

This product is exclusively available under Proteintech Group brand and is not available to purchase from any other manufacturer.

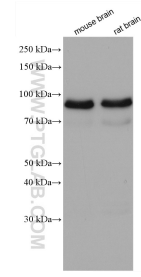
Selected Validation Data



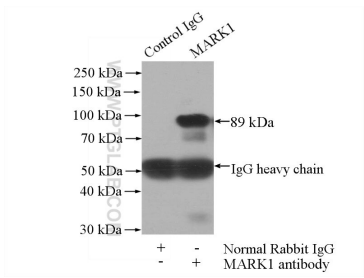
Immunohistochemical analysis of paraffin-embedded rat testis tissue slide using 21552-1-AP (MARK1 antibody) at dilution of 1:200 (under 10x lens). Heat mediated antigen retrieval with Tris-EDTA buffer (pH 9.0).



Immunohistochemical analysis of paraffin-embedded rat testis tissue slide using 21552-1-AP (MARK1 antibody) at dilution of 1:200 (under 40x lens). Heat mediated antigen retrieval with Tris-EDTA buffer (pH 9.0).



Various lysates were subjected to SDS PAGE followed by western blot with 21552-1-AP (MARK1 antibody) at dilution of 1:3000 incubated at room temperature for 1.5 hours.



IP Result of anti-MARK1 (IP:21552-1-AP, 4ug; Detection:21552-1-AP 1:1000) with mouse brain tissue lysate 3440ug.