

For Research Use Only

CYP26B1 Polyclonal antibody

Catalog Number: 21555-1-AP

Featured Product

18 Publications



Basic Information

Catalog Number:

21555-1-AP

Size:

150ul, Concentration: 550 ug/ml by Nanodrop;

Source:

Rabbit

Isotype:

IgG

Immunogen Catalog Number:

AG15368

GenBank Accession Number:

BC069443

GeneID (NCBI):

56603

UNIPROT ID:

Q9NR63

Full Name:

cytochrome P450, family 26, subfamily B, polypeptide 1

Calculated MW:

512 aa, 58 kDa

Observed MW:

49-58 kDa

Purification Method:

Antigen affinity purification

Recommended Dilutions:

WB 1:1000-1:4000

IP 0.5-4.0 ug for 1.0-3.0 mg of total protein lysate

IHC 1:50-1:500

IF/ICC 1:50-1:500

Applications

Tested Applications:

WB, IHC, IF/ICC, IP, ELISA

Cited Applications:

WB, IHC, IF

Species Specificity:

human, mouse, rat

Cited Species:

human, mouse, rat

Note-IHC: suggested antigen retrieval with TE buffer pH 9.0; (*) Alternatively, antigen retrieval may be performed with citrate buffer pH 6.0

Positive Controls:

WB : HeLa cells, human brain tissue, L02 cells

IP : L02 cells,

IHC : human hepatocirrhosis tissue, human heart tissue

IF/ICC : HepG2 cells,

Background Information

CYP26B1(Cytochrome P450 26B1) is involved in the metabolism of retinoic acid (RA), rendering this classical morphogen inactive through oxidation. It has 3 isoforms produced by alternative splicing. Cyp26b1 deficiency induces pronounced apoptosis in the developing limb and delayed chondrocyte maturation (PMID:15030763). Defects in CYP26B1 are the cause of radiohumeral fusions with other skeletal and craniofacial anomalies (RHFA).

Notable Publications

Author	Pubmed ID	Journal	Application
Marta U Wotoszynowska-Fraser	34417282	eNeuro	WB
Hande Login	26446231	J Neurosci	IF
Nadia Y Edelsztejn	31755607	Mol Reprod Dev	WB, IHC

Storage

Storage:

Store at -20°C. Stable for one year after shipment.

Storage Buffer:

PBS with 0.02% sodium azide and 50% glycerol pH 7.3.

Aliquoting is unnecessary for -20°C storage

*** 20ul sizes contain 0.1% BSA

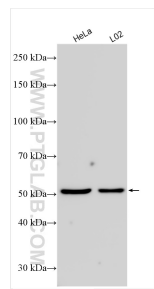
For technical support and original validation data for this product please contact:

T: 1 (888) 4PTGLAB (1-888-478-4522) (toll free in USA), or 1(312) 455-8498 (outside USA)

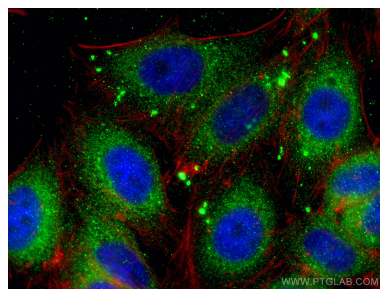
E: proteintech@ptglab.com
W: ptglab.com

This product is exclusively available under Proteintech Group brand and is not available to purchase from any other manufacturer.

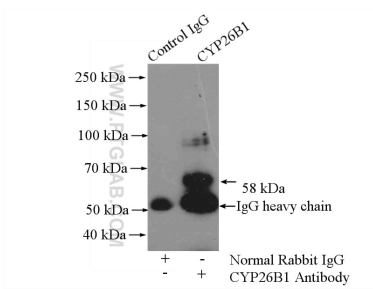
Selected Validation Data



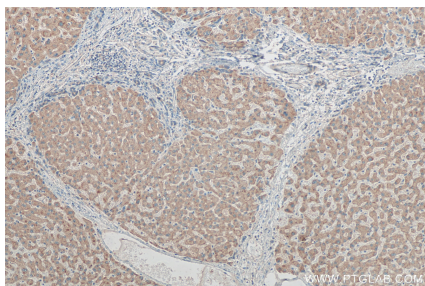
Various lysates were subjected to SDS PAGE followed by western blot with 21555-1-AP (CYP26B1 antibody) at dilution of 1:2000 incubated at room temperature for 1.5 hours.



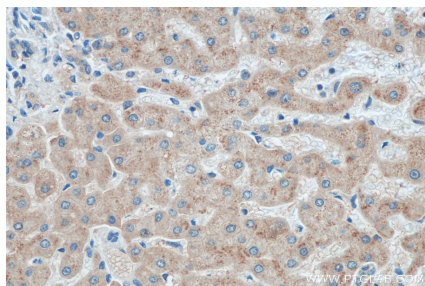
Immunofluorescent analysis of (4% PFA) fixed HepG2 cells using CYP26B1 antibody (21555-1-AP) at dilution of 1:200 and CoraLite®488-Conjugated Goat Anti-Rabbit IgG(H+L), CL594-phalloidin (red).



IP result of anti-CYP26B1 (IP:21555-1-AP, 4ug; Detection:21555-1-AP 1:500) with L02 cells lysate 2400ug.



Immunohistochemical analysis of paraffin-embedded human hepatocirrhosis tissue slide using 21555-1-AP (CYP26B1 antibody) at dilution of 1:200 (under 10x lens). Heat mediated antigen retrieval with Tris-EDTA buffer (pH 9.0).



Immunohistochemical analysis of paraffin-embedded human hepatocirrhosis tissue slide using 21555-1-AP (CYP26B1 antibody) at dilution of 1:200 (under 40x lens). Heat mediated antigen retrieval with Tris-EDTA buffer (pH 9.0).