

For Research Use Only

SLC25A25 Polyclonal antibody

Catalog Number: 21568-1-AP

1 Publications



Basic Information

Catalog Number:

21568-1-AP

Size:

150ul, Concentration: 133 ug/ml by Nanodrop and 133 ug/ml by Bradford method using BSA as the standard;

Source:

Rabbit

Isotype:

IgG

Immunogen Catalog Number:

AG16086

GenBank Accession Number:

BC103933

GeneID (NCBI):

114789

UNIPROT ID:

Q6KCM7

Full Name:

solute carrier family 25 (mitochondrial carrier; phosphate carrier), member 25

Calculated MW:

469 aa, 53 kDa

Observed MW:

50 kDa, 100 kDa

Purification Method:

Antigen affinity purification

Recommended Dilutions:

WB 1:500-1:1000

IHC 1:20-1:200

Applications

Tested Applications:

WB, IHC, ELISA

Cited Applications:

WB

Species Specificity:

human, mouse, rat

Cited Species:

mouse

Note-IHC: suggested antigen retrieval with TE buffer pH 9.0; (*) Alternatively, antigen retrieval may be performed with citrate buffer pH 6.0

Positive Controls:

WB : RAW 264.7 cells, RAW264.7 cells

IHC : human liver tissue,

Notable Publications

Author	Pubmed ID	Journal	Application
Clint D J Tavares	32848060	Proc Natl Acad Sci U S A	WB

Storage

Storage:

Store at -20°C. Stable for one year after shipment.

Storage Buffer:

PBS with 0.02% sodium azide and 50% glycerol pH 7.3.

Aliquoting is unnecessary for -20°C storage

*** 20ul sizes contain 0.1% BSA

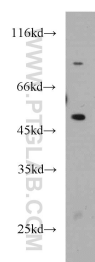
For technical support and original validation data for this product please contact:

T: 1 (888) 4PTGLAB (1-888-478-4522) (toll free in USA), or 1(312) 455-8498 (outside USA)

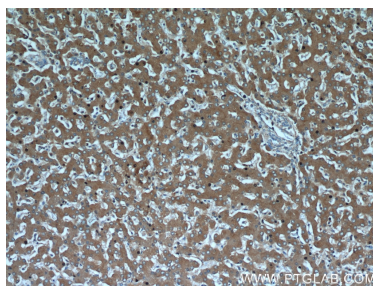
E: proteintech@ptglab.com
W: ptglab.com

This product is exclusively available under Proteintech Group brand and is not available to purchase from any other manufacturer.

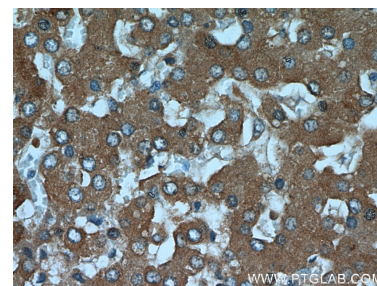
Selected Validation Data



RAW264.7 cells were subjected to SDS PAGE followed by western blot with 21568-1-AP (SLC25A25 antibody) at dilution of 1:500 incubated at room temperature for 1.5 hours.



Immunohistochemical analysis of paraffin-embedded human liver using 21568-1-AP (SLC25A25 antibody) at dilution of 1:50 (under 10x lens).



Immunohistochemical analysis of paraffin-embedded human liver using 21568-1-AP (SLC25A25 antibody) at dilution of 1:50 (under 40x lens).