

For Research Use Only

# ATP6V0A4 Polyclonal antibody, PBS Only

Catalog Number: 21570-1-PBS

Featured Product



## Basic Information

**Catalog Number:**

21570-1-PBS

**Size:**

100ug, Concentration: 1 mg/ml by Nanodrop;

**Source:**

Rabbit

**Isotype:**

IgG

**Immunogen Catalog Number:**

AG16095

**GenBank Accession Number:**

BC109305

**GeneID (NCBI):**

50617

**UNIPROT ID:**

Q9HBG4

**Full Name:**

ATPase, H<sup>+</sup> transporting, lysosomal

V0 subunit a4

**Calculated MW:**

840 aa, 96 kDa

**Observed MW:**

100 kDa

**Purification Method:**

Antigen affinity purification

## Applications

**Tested Applications:**

WB, IHC, Indirect ELISA

**Species Specificity:**

human, mouse

## Background Information

The ATP6V0A4 is a component of vacuolar-H<sup>+</sup>ATPase (V-ATPase) which is a multi-subunit enzyme that couples ATP hydrolysis to proton pumping across membranes. The V-ATPases are comprised of two major parts, the cytosolic V1 domain involved in ATP-binding and subsequent hydrolysis, and the membrane-associated V0 domain responsible for proton translocation. The V0 domain is composed of five subunits: a, c, c', c'' and d. The 'a' subunit of V0 domain has four isoforms: a1-a4. It has been found that mutations in ATP6V0A4(a4) are associated with distal renal tubular acidosis (dRTA) combined in some cases with progressive hearing loss leading to sensorineural deafness. This antibody was generated against the internal region of human ATP6V0A4 and is predicted to detect the a4 isoform only.

## Storage

**Storage:**

Store at -80°C.

**Storage Buffer:**

PBS only, pH7.3

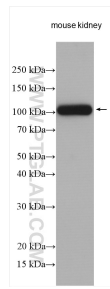
For technical support and original validation data for this product please contact:

T: 1 (888) 4PTGLAB (1-888-478-4522) (toll free in USA), or 1(312) 455-8498 (outside USA)

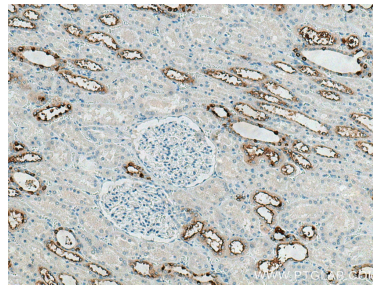
E: [proteintech@ptglab.com](mailto:proteintech@ptglab.com)  
W: [ptglab.com](http://ptglab.com)

This product is exclusively available under Proteintech Group brand and is not available to purchase from any other manufacturer.

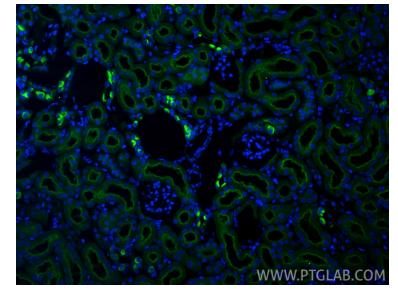
## Selected Validation Data



Mouse kidney lysates were subjected to SDS PAGE followed by western blot with 21570-1-AP (ATP6VOA4 antibody) at dilution of 1:1000 incubated at room temperature for 1.5 hours. This data was developed using the same antibody clone with 21570-1-PBS in a different storage buffer formulation.



Immunohistochemical analysis of paraffin-embedded human kidney tissue slide using 21570-1-AP (ATP6VOA4 antibody) at dilution of 1:200 (under 10x lens). Heat mediated antigen retrieval with Tris-EDTA buffer (pH 9.0). This data was developed using the same antibody clone with 21570-1-PBS in a different storage buffer formulation.



Immunofluorescent analysis of (4% PFA) fixed paraffin-embedded mouse kidney tissue using ATP6VOA4 antibody (21570-1-AP) at dilution of 1:200 and CoraLite® 488-Conjugated Goat Anti-Rabbit IgG(H+L) (SA00013-2). Heat mediated antigen retrieval with Tris-EDTA buffer (pH 9.0). This data was developed using the same antibody clone with 21570-1-PBS in a different storage buffer formulation.