

For Research Use Only

RHOG Polyclonal antibody

Catalog Number: 21576-1-AP



Basic Information

Catalog Number:

21576-1-AP

Size:

150ul, Concentration: 260 ug/ml by Nanodrop;

Source:

Rabbit

Isotype:

IgG

Immunogen Catalog Number:

AG16118

GenBank Accession Number:

BC104178

GeneID (NCBI):

391

UNIPROT ID:

P84095

Full Name:

ras homolog gene family, member G (rho G)

Calculated MW:

191 aa, 21 kDa

Observed MW:

21 kDa

Purification Method:

Antigen affinity purification

Recommended Dilutions:

WB 1:500-1:1000

Applications

Tested Applications:

WB, ELISA

Species Specificity:

human

Positive Controls:

WB : Jurkat cells, HeLa cells, MCF-7 cells, K-562 cells

Background Information

RHOG, also named as ARHG, belongs to the small GTPase superfamily and Rho family. It is required for the formation of membrane ruffles during macropinocytosis. And it is required for the formation of cup-like structures during trans-endothelial migration of leukocytes. In case of Salmonella enterica infection, it is activated by SopB and SGEF, which induces cytoskeleton rearrangements and promotes bacterial entry. This antibody is specific to RHOG.

Storage

Storage:

Store at -20°C. Stable for one year after shipment.

Storage Buffer:

PBS with 0.02% sodium azide and 50% glycerol pH 7.3.

Aliquoting is unnecessary for -20°C storage

*** 20ul sizes contain 0.1% BSA

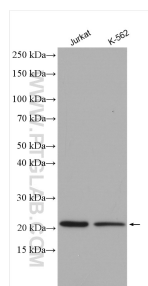
For technical support and original validation data for this product please contact:

T: 1 (888) 4PTGLAB (1-888-478-4522) (toll free in USA), or 1(312) 455-8498 (outside USA)

E: proteintech@ptglab.com
W: ptglab.com

This product is exclusively available under Proteintech Group brand and is not available to purchase from any other manufacturer.

Selected Validation Data



Various lysates were subjected to SDS PAGE followed by western blot with 21576-1-AP (RHOG antibody) at dilution of 1:600 incubated at room temperature for 1.5 hours.