

For Research Use Only

VMO1 Polyclonal antibody

Catalog Number: 21577-1-AP



Basic Information

Catalog Number: 21577-1-AP	GenBank Accession Number: BC104195	Purification Method: Antigen affinity purification
Size: 150ul, Concentration: 300 µg/ml by Nanodrop and 140 µg/ml by Bradford method using BSA as the standard;	GeneID (NCBI): 284013	Recommended Dilutions: WB 1:500-1:1000 IHC 1:20-1:200 IF 1:20-1:200
Source: Rabbit	Full Name: vitelline membrane outer layer 1 homolog (chicken)	
Isotype: IgG	Calculated MW: 202 aa, 22 kDa	
Immunogen Catalog Number: AG16120	Observed MW: 22 kDa	

Applications

Tested Applications: IF, IHC, WB, ELISA	Positive Controls:
Species Specificity: human, mouse, rat	WB: HeLa cells, HEK-293 cells
Note-IHC: suggested antigen retrieval with TE buffer pH 9.0; (*) Alternatively, antigen retrieval may be performed with citrate buffer pH 6.0	IHC: human kidney tissue,
	IF: HeLa cells,

Background Information

Storage

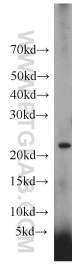
Storage:
Store at -20°C. Stable for one year after shipment.
Storage Buffer:
PBS with 0.02% sodium azide and 50% glycerol pH 7.3.
Aliquoting is unnecessary for -20°C storage

*** 20ul sizes contain 0.1% BSA

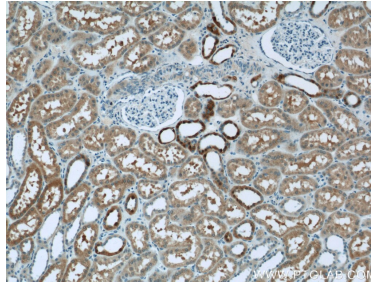
For technical support and original validation data for this product please contact:
T: 1 (888) 4PTGLAB (1-888-478-4522) (toll free in USA), or 1(312) 455-8498 (outside USA)
E: proteintech@ptglab.com
W: ptglab.com

This product is exclusively available under Proteintech Group brand and is not available to purchase from any other manufacturer.

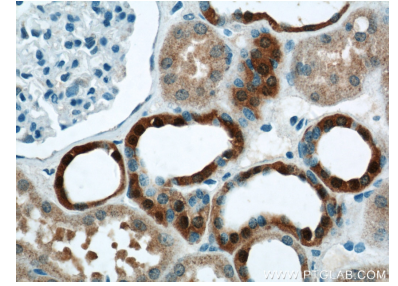
Selected Validation Data



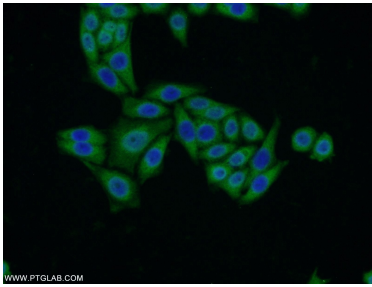
HeLa cells were subjected to SDS PAGE followed by western blot with 21577-1-AP (VMO1 antibody) at dilution of 1:300 incubated at room temperature for 1.5 hours.



Immunohistochemical analysis of paraffin-embedded human kidney tissue slide using 21577-1-AP (VMO1 Antibody) at dilution of 1:50 (under 10x lens).



Immunohistochemical analysis of paraffin-embedded human kidney tissue slide using 21577-1-AP (VMO1 Antibody) at dilution of 1:50 (under 40x lens).



Immunofluorescent analysis of HeLa cells using 21577-1-AP (VMO1 antibody) at dilution of 1:50 and Alexa Fluor 488-conjugated AffiniPure Goat Anti-Rabbit IgG(H+L).