

For Research Use Only

# DLL4 Polyclonal antibody

Catalog Number: 21584-1-AP

11 Publications



## Basic Information

<b>Catalog Number:</b> 21584-1-AP	<b>GenBank Accession Number:</b> BC106950	<b>Purification Method:</b> Antigen affinity purification
<b>Size:</b> 150ul , Concentration: 900 µg/ml by Nanodrop;	<b>GeneID (NCBI):</b> 54567	<b>Recommended Dilutions:</b> WB 1:200-1:1000 IP 0.5-4.0 ug for IP and 1:150-1:600 for WB
<b>Source:</b> Rabbit	<b>Full Name:</b> delta-like 4 (Drosophila)	<b>IF 1:50-1:500</b>
<b>Isotype:</b> IgG	<b>Calculated MW:</b> 685 aa, 75 kDa	
<b>Immunogen Catalog Number:</b> AG16140	<b>Observed MW:</b> 75-80 kDa	

## Applications

<b>Tested Applications:</b> IF, IP, WB, ELISA	<b>Positive Controls:</b>
<b>Cited Applications:</b> IF, IHC, WB	<b>WB :</b> mouse brain tissue, A431 cells
<b>Species Specificity:</b> human, mouse	<b>IP :</b> mouse lung tissue,
<b>Cited Species:</b> human, mouse	<b>IF :</b> human stomach cancer tissue,

## Background Information

DLL4, also named as Delta4, plays a role in the Notch signaling pathway. It activates Notch-1 and Notch-4. Notch signaling is activated upon engagement of the Notch receptor with its ligands, the DSL (Delta, Serrate, Lag2) proteins of single-pass type I membrane proteins. DLL4 is highly expressed in the vascular endothelium.

## Notable Publications

Author	Pubmed ID	Journal	Application
Jing Bai	32955682	Angiogenesis	WB,IF
Yangyan He	31589383	J Cell Mol Med	WB
Qiong Xu	34783299	Bioengineered	WB

## Storage

**Storage:**  
Store at -20°C. Stable for one year after shipment.  
**Storage Buffer:**  
PBS with 0.02% sodium azide and 50% glycerol pH 7.3.  
**Aliquoting is unnecessary for -20°C storage**

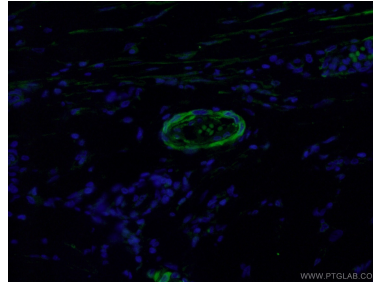
For technical support and original validation data for this product please contact:  
T: 1 (888) 4PTGLAB (1-888-478-4522) (toll free in USA), or 1(312) 455-8498 (outside USA)  
E: proteintech@ptglab.com  
W: ptglab.com

**This product is exclusively available under Proteintech Group brand and is not available to purchase from any other manufacturer.**

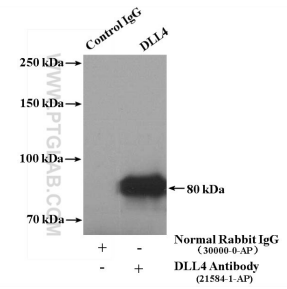
## Selected Validation Data



mouse brain tissue were subjected to SDS PAGE followed by western blot with 21584-1-AP (DLL4 antibody) at dilution of 1:300 incubated at room temperature for 1.5 hours.



Immunofluorescent analysis of (4% PFA) fixed human stomach cancer tissue using 21584-1-AP (DLL4 antibody) at dilution of 1:50 and Alexa Fluor 488-conjugated AffiniPure Goat Anti-Rabbit IgG(H+L).



IP result of anti-DLL4 (IP:21584-1-AP, 4ug; Detection:21584-1-AP 1:300) with mouse lung tissue lysate 4000 ug.