

For Research Use Only

SUGCT Polyclonal antibody, PBS Only

Catalog Number: 21589-1-PBS



Basic Information

Catalog Number: 21589-1-PBS	GenBank Accession Number: BC098318	Purification Method: Antigen affinity purification
Size: 100ug, Concentration: 1 mg/ml by Nanodrop;	GeneID (NCBI): 79783	
Source: Rabbit	UNIPROT ID: Q9HAC7	
Isotype: IgG	Full Name: chromosome 7 open reading frame 10	
Immunogen Catalog Number: AG16159	Calculated MW: 471 aa, 51 kDa	
	Observed MW: 48-55 kDa	

Applications

Tested Applications:
WB, IHC, Indirect ELISA

Species Specificity:
human, mouse, rat

Background Information

C7orf10 is also named as SUGCT, DERP13 and belongs to the CaiB/BaiF CoA-transferase family. It may function as part of a multiunit enzyme complex (A), similar to the alpha-ketoglutarate dehydrogenase system, or as the second of two independent enzymes, the first of which decarboxylates alpha-ketoadipate to glutarate (B). This protein has 4 isoforms produced by alternative splicing with the molecular weight from 43 kDa to 51 kDa.

Storage

Storage:
Store at -80°C.

Storage Buffer:
PBS only, pH7.3

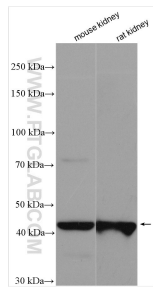
For technical support and original validation data for this product please contact:

T: 1 (888) 4PTGLAB (1-888-478-4522) (toll free in USA), or 1(312) 455-8498 (outside USA)

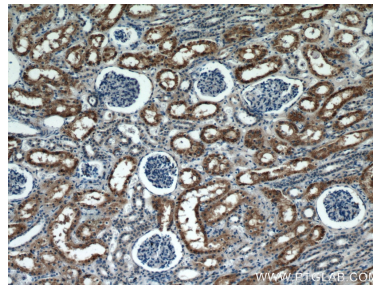
E: proteintech@ptglab.com
W: ptglab.com

This product is exclusively available under Proteintech Group brand and is not available to purchase from any other manufacturer.

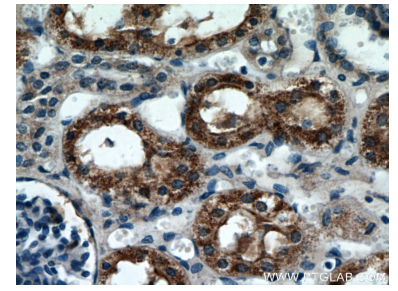
Selected Validation Data



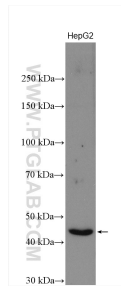
Various lysates were subjected to SDS PAGE followed by western blot with 21589-1-AP (C7orf10 antibody) at dilution of 1:2000 incubated at room temperature for 1.5 hours. This data was developed using the same antibody clone with 21589-1-PBS in a different storage buffer formulation.



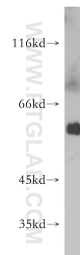
Immunohistochemical analysis of paraffin-embedded human kidney using 21589-1-AP (C7orf10 antibody) at dilution of 1:50 (under 10x lens). This data was developed using the same antibody clone with 21589-1-PBS in a different storage buffer formulation.



Immunohistochemical analysis of paraffin-embedded human kidney using 21589-1-AP (C7orf10 antibody) at dilution of 1:50 (under 40x lens). This data was developed using the same antibody clone with 21589-1-PBS in a different storage buffer formulation.



HepG2 cells were subjected to SDS PAGE followed by western blot with 21589-1-AP (C7orf10 antibody) at dilution of 1:1000 incubated at room temperature for 1.5 hours. This data was developed using the same antibody clone with 21589-1-PBS in a different storage buffer formulation.



mouse skeletal muscle tissue were subjected to SDS PAGE followed by western blot with 21589-1-AP (C7orf10 antibody) at dilution of 1:500 incubated at room temperature for 1.5 hours. This data was developed using the same antibody clone with 21589-1-PBS in a different storage buffer formulation.