

For Research Use Only

PTGFR Polyclonal antibody

Catalog Number: 21595-1-AP



Basic Information

Catalog Number: 21595-1-AP	GenBank Accession Number: BC112965	Purification Method: Antigen affinity purification
Size: 150ul , Concentration: 750 ug/ml by Nanodrop;	GeneID (NCBI): 5737	Recommended Dilutions: WB: 1:1000-1:4000 IF/ICC: 1:200-1:800
Source: Rabbit	UNIPROT ID: P43088	
Isotype: IgG	Full Name: prostaglandin F receptor (FP)	
Immunogen Catalog Number: AG16173	Calculated MW: 359 aa, 40 kDa	
	Observed MW: 30-40 kDa	

Applications

Tested Applications: WB, IF/ICC, ELISA	Positive Controls:
Species Specificity: human, mouse, rat	WB : fetal human brain tissue, mouse brain tissue, rat brain tissue IF/ICC : PC-3 cells,

Background Information

Prostanoid FP receptor (PTGFR) is a member of the G-protein coupled receptor family and is involved in several physiologic processes. PTGFR is a receptor for prostaglandin F₂-alpha (PGF₂-alpha), which is known to be a potent luteolytic agent, and may also be involved in modulating intraocular pressure and smooth muscle contraction in the uterus (PMID: 9235889).

Storage

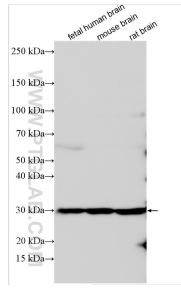
Storage:
Store at -20°C. Stable for one year after shipment.
Storage Buffer:
PBS with 0.02% sodium azide and 50% glycerol, pH7.3
Aliquoting is unnecessary for -20°C storage

*** 20ul sizes contain 0.1% BSA

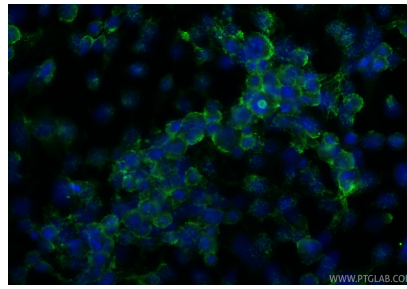
For technical support and original validation data for this product please contact:
T: 1 (888) 4PTGLAB (1-888-478-4522) (toll free in USA), or 1(312) 455-8498 (outside USA)
E: proteintech@ptglab.com
W: ptglab.com

This product is exclusively available under Proteintech Group brand and is not available to purchase from any other manufacturer.

Selected Validation Data



Various lysates were subjected to SDS PAGE followed by western blot with 21595-1-AP (PTGFR antibody) at dilution of 1:2000 incubated at room temperature for 1.5 hours.



Immunofluorescent analysis of (-20°C Ethanol) fixed PC-3 cells using PTGFR antibody (21595-1-AP) at dilution of 1:400 and CoraLite® 488-Conjugated Goat Anti-Rabbit IgG(H+L) (SA00013-2).