

For Research Use Only

SPATA6L Polyclonal antibody

Catalog Number: 21597-1-AP



Basic Information

| | | |
|---|---|--|
| Catalog Number: 21597-1-AP | GenBank Accession Number: BC036349 | Purification Method: Antigen affinity purification |
| Size: 150ul , Concentration: 280 ug/ml by Nanodrop; | GeneID (NCBI): 55064 | Recommended Dilutions: WB 1:500-1:1000 |
| Source: Rabbit | UNIPROT ID: Q8N4H0 | |
| Isotype: IgG | Full Name: chromosome 9 open reading frame 68 | |
| Immunogen Catalog Number: AG16193 | Calculated MW: 392 aa, 45 kDa | |
| | Observed MW: 42 kDa | |

Applications

| | |
|--|--|
| Tested Applications: WB, ELISA | Positive Controls: WB : HepG2 cells, |
| Species Specificity: human | |

Background Information

SPATA6L, encoding a spermatogenesis-associated 6-like protein (SPATA6L), is predicted to be located in the spermatid junctions and involved in spermatogenesis, and is considered to be a differentially expressed gene associated with male sex reversal; however, its molecular function remains unknown. In addition, an important paralogous homologue of SPATA6L is SPATA6, which is required for the correct assembly of the sperm junction components and the head-tail junction.

Storage

Storage:
Store at -20°C. Stable for one year after shipment.
Storage Buffer:
PBS with 0.02% sodium azide and 50% glycerol pH 7.3.
Aliquoting is unnecessary for -20°C storage

*** 20ul sizes contain 0.1% BSA

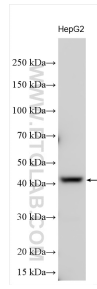
For technical support and original validation data for this product please contact:

T: 1 (888) 4PTGLAB (1-888-478-4522) (toll free in USA), or 1(312) 455-8498 (outside USA)

E: proteintech@ptglab.com
W: ptglab.com

This product is exclusively available under Proteintech Group brand and is not available to purchase from any other manufacturer.

Selected Validation Data



Various lysates were subjected to SDS PAGE followed by western blot with 21597-1-AP (SPATA6L antibody) at dilution of 1:800 incubated at room temperature for 1.5 hours.