

For Research Use Only

SPATA6L Polyclonal antibody, PBS Only

Catalog Number: 21597-1-PBS



Basic Information

Catalog Number: 21597-1-PBS	GenBank Accession Number: BC036349	Purification Method: Antigen affinity purification
Size: 100ug, Concentration: 1 mg/ml by Nanodrop;	GeneID (NCBI): 55064	
Source: Rabbit	UNIPROT ID: Q8N4H0	
Isotype: IgG	Full Name: chromosome 9 open reading frame 68	
Immunogen Catalog Number: AG16193	Calculated MW: 392 aa, 45 kDa	
	Observed MW: 42 kDa	

Applications

Tested Applications:
WB, Indirect ELISA

Species Specificity:
human

Background Information

SPATA6L, encoding a spermatogenesis-associated 6-like protein (SPATA6L), is predicted to be located in the spermatid junctions and involved in spermatogenesis, and is considered to be a differentially expressed gene associated with male sex reversal; however, its molecular function remains unknown. In addition, an important paralogous homologue of SPATA6L is SPATA6, which is required for the correct assembly of the sperm junction components and the head-tail junction.

Storage

Storage:
Store at -80°C.
Storage Buffer:
PBS Only

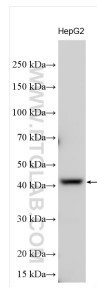
For technical support and original validation data for this product please contact:

T: 1 (888) 4PTGLAB (1-888-478-4522) (toll free
in USA), or 1(312) 455-8498 (outside USA)

E: proteintech@ptglab.com
W: ptglab.com

This product is exclusively available under Proteintech Group brand and is not available to purchase from any other manufacturer.

Selected Validation Data



Various lysates were subjected to SDS PAGE followed by western blot with 21597-1-AP (SPATA6L antibody) at dilution of 1:800 incubated at room temperature for 1.5 hours. This data was developed using the same antibody clone with 21597-1-PBS in a different storage buffer formulation.