

For Research Use Only

# LRRC8C Polyclonal antibody

Catalog Number: 21601-1-AP

6 Publications



## Basic Information

<b>Catalog Number:</b> 21601-1-AP	<b>GenBank Accession Number:</b> BC113973	<b>Purification Method:</b> Antigen affinity purification
<b>Size:</b> 150ul , Concentration: 450 ug/ml by Nanodrop;	<b>GeneID (NCBI):</b> 84230	<b>Recommended Dilutions:</b> WB 1:500-1:2000
<b>Source:</b> Rabbit	<b>UNIPROT ID:</b> Q8TDW0	IHC 1:50-1:500
<b>Isotype:</b> IgG	<b>Full Name:</b> leucine rich repeat containing 8 family, member C	IF/ICC 1:50-1:500
<b>Immunogen Catalog Number:</b> AG16213	<b>Calculated MW:</b> 803 aa, 92 kDa	
	<b>Observed MW:</b> 92 kDa	

## Applications

<b>Tested Applications:</b> WB, IHC, IF/ICC, ELISA	<b>Positive Controls:</b>
<b>Cited Applications:</b> WB, IF	WB : THP-1 cells,
<b>Species Specificity:</b> human, mouse, rat	IHC : mouse heart tissue,
<b>Cited Species:</b> human, mouse, rat	IF/ICC : HepG2 cells,
<b>Note-IHC: suggested antigen retrieval with TE buffer pH 9.0; (*) Alternatively, antigen retrieval may be performed with citrate buffer pH 6.0</b>	

## Background Information

LRRC8C (Leucine-rich repeat-containing protein 8C), also known as AD158, is a non-essential component of the volume-regulated anion channel (VRAC, also known as VSOAC channel), which is required to maintain a constant cell volume in response to extracellular or intracellular permeability changes. The VRAC channel conducts iodide better than chloride and can also conduct organic osmolytes like taurine. The VRAC channel also mediates transport of immunoreactive cyclic dinucleotide GMP-AMP (2'-3'-cGAMP), an immune messenger produced in response to DNA virus in the cytosol (PMID:24790029; 26824658; 28193731).

## Notable Publications

Author	Pubmed ID	Journal	Application
Carmela Serpe	36428520	Biomedicines	WB,IF
Yu Deng	39413198	Sci Adv	WB
John D Tranter	39386563	bioRxiv	WB

## Storage

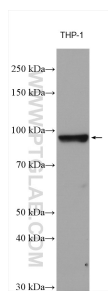
**Storage:**  
Store at -20°C. Stable for one year after shipment.  
**Storage Buffer:**  
PBS with 0.02% sodium azide and 50% glycerol pH 7.3.  
Aliquoting is unnecessary for -20°C storage

\*\*\* 20ul sizes contain 0.1% BSA

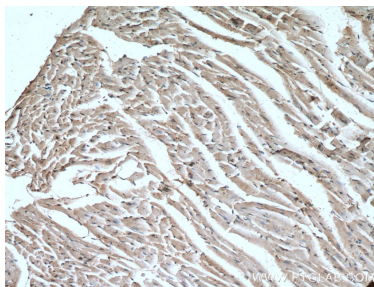
For technical support and original validation data for this product please contact:  
T: 1 (888) 4PTGLAB (1-888-478-4522) (toll free in USA), or 1(312) 455-8498 (outside USA)  
E: proteintech@ptglab.com  
W: ptglab.com

This product is exclusively available under Proteintech Group brand and is not available to purchase from any other manufacturer.

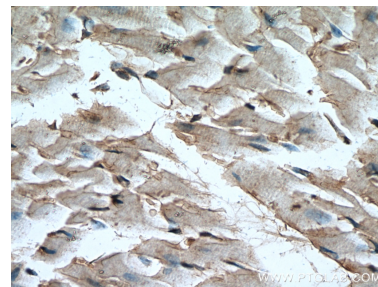
## Selected Validation Data



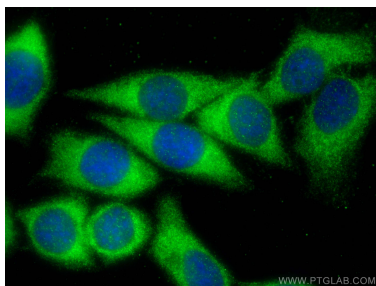
THP-1 cells were subjected to SDS PAGE followed by western blot with 21601-1-AP (LRRC8C antibody) at dilution of 1:1000 incubated at room temperature for 1.5 hours.



Immunohistochemical analysis of paraffin-embedded mouse heart tissue slide using 21601-1-AP (LRRC8C antibody) at dilution of 1:200 (under 10x lens. Heat mediated antigen retrieval with Tris-EDTA buffer (pH 9.0).



Immunohistochemical analysis of paraffin-embedded mouse heart tissue slide using 21601-1-AP (LRRC8C antibody) at dilution of 1:200 (under 40x lens. Heat mediated antigen retrieval with Tris-EDTA buffer (pH 9.0).



Immunofluorescent analysis of (-20°C Methanol) fixed HepG2 cells using LRRC8C antibody (21601-1-AP) at dilution of 1:200 and CoraLite®488-Conjugated AffiniPure Goat Anti-Rabbit IgG(H+L).