

For Research Use Only

# MRPL28 Polyclonal antibody

Catalog Number: 21604-1-AP

2 Publications



## Basic Information

### Catalog Number:

21604-1-AP

### Size:

150ul, Concentration: 550 ug/ml by Nanodrop and 333 ug/ml by Bradford method using BSA as the standard;

### Source:

Rabbit

### Isotype:

IgG

### Immunogen Catalog Number:

AG16224

### GenBank Accession Number:

BC000990

### GeneID (NCBI):

10573

### UNIPROT ID:

Q13084

### Full Name:

mitochondrial ribosomal protein L28

### Calculated MW:

30 kDa

### Observed MW:

30 kDa

### Purification Method:

Antigen affinity purification

### Recommended Dilutions:

WB 1:1000-1:4000

IP 0.5-4.0 ug for 1.0-3.0 mg of total protein lysate

IHC 1:20-1:200

IF/ICC 1:200-1:800

## Applications

### Tested Applications:

WB, IHC, IF/ICC, IP, ELISA

### Cited Applications:

WB

### Species Specificity:

human, mouse, rat

### Cited Species:

human

**Note-IHC: suggested antigen retrieval with TE buffer pH 9.0; (\*) Alternatively, antigen retrieval may be performed with citrate buffer pH 6.0**

### Positive Controls:

**WB**: HEK-293T cells, HeLa cells, HepG2 cells, mouse kidney tissue, rat kidney tissue, JAR cells

**IP**: mouse brain tissue,

**IHC**: human kidney tissue, human testis tissue

**IF/ICC**: HeLa cells,

## Notable Publications

Author	Pubmed ID	Journal	Application
Zhishan Wu	37257705	J Ethnopharmacol	WB
Sumudu S C Amarasekera	37133451	Hum Mol Genet	WB

## Storage

### Storage:

Store at -20°C. Stable for one year after shipment.

### Storage Buffer:

PBS with 0.02% sodium azide and 50% glycerol pH 7.3.

Aliquoting is unnecessary for -20°C storage

\*\*\* 20ul sizes contain 0.1% BSA

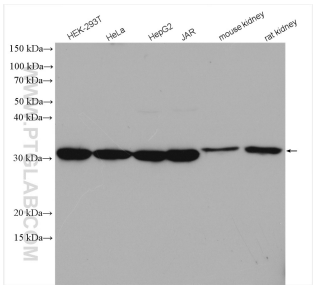
For technical support and original validation data for this product please contact:

T: 1 (888) 4PTGLAB (1-888-478-4522) (toll free in USA), or 1(312) 455-8498 (outside USA)

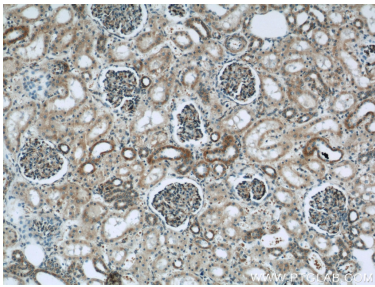
E: [proteintech@ptglab.com](mailto:proteintech@ptglab.com)  
W: [ptglab.com](http://ptglab.com)

This product is exclusively available under Proteintech Group brand and is not available to purchase from any other manufacturer.

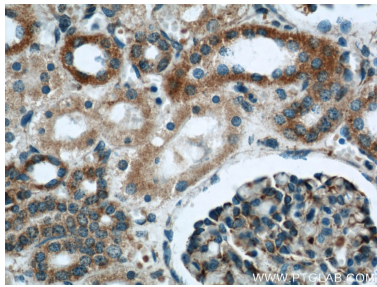
Selected Validation Data



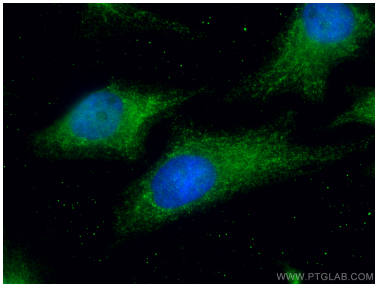
Various lysates were subjected to SDS PAGE followed by western blot with 21604-1-AP (MRPL28 antibody) at dilution of 1:2000 incubated at room temperature for 1.5 hours.



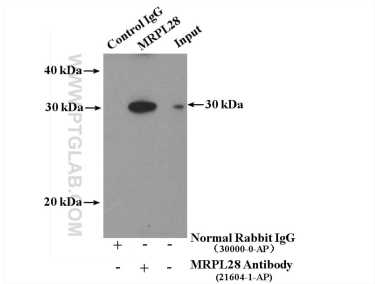
Immunohistochemical analysis of paraffin-embedded human kidney using 21604-1-AP (MRPL28 antibody) at dilution of 1:50 (under 10x lens).



Immunohistochemical analysis of paraffin-embedded human kidney using 21604-1-AP (MRPL28 antibody) at dilution of 1:50 (under 40x lens).



Immunofluorescent analysis of (4% PFA) fixed HeLa cells using MRPL28 antibody (21604-1-AP) at dilution of 1:400 and CoraLite® 488-Conjugated Goat Anti-Rabbit IgG(H+L).



IP result of anti-MRPL28 (IP:21604-1-AP, 4ug; Detection:21604-1-AP 1:500) with mouse brain tissue lysate 4000ug.