

For Research Use Only

TMED9 Polyclonal antibody

Catalog Number: 21620-1-AP

Featured Product

8 Publications



Basic Information

Catalog Number:

21620-1-AP

Size:

150ul, Concentration: 500 ug/ml by Nanodrop;

Source:

Rabbit

Isotype:

IgG

Immunogen Catalog Number:

AG13813

GenBank Accession Number:

BC001123

GeneID (NCBI):

54732

UNIPROT ID:

Q9BVK6

Full Name:

transmembrane emp24 protein transport domain containing 9

Calculated MW:

235 aa, 27 kDa

Observed MW:

24-27 kDa

Purification Method:

Antigen affinity purification

Recommended Dilutions:

WB 1:1000-1:8000

IP 0.5-4.0 ug for 1.0-3.0 mg of total protein lysate

IHC 1:50-1:500

IF/ICC 1:50-1:500

Applications

Tested Applications:

WB, IHC, IF/ICC, IP, ELISA

Cited Applications:

WB, IHC, CoIP, IF

Species Specificity:

human, mouse, rat, pig

Cited Species:

human, mouse

Note-IHC: suggested antigen retrieval with TE buffer pH 9.0; (*) Alternatively, antigen retrieval may be performed with citrate buffer pH 6.0

Positive Controls:

WB : HepG2 cells, L02 cells, pig liver tissue, mouse lung tissue, mouse pancreas tissue, mouse brain tissue, mouse liver tissue, rat liver tissue

IP : mouse liver tissue,

IHC : human liver tissue,

IF/ICC : HepG2 cells, HEK-293 cells

Background Information

TMED9 (also named as GMP25, GP25L2 or p25) is a member of the EMP24/GP25L family. TMED9 probably forms hetero-oligomeric complexes with TMED7 (p27), TMED2 (p24), and TMED10 (p23) (PMID: 10359607). Located in the endoplasmic reticulum and the Golgi, TMED9 appears to be involved in vesicular protein trafficking, mainly in the early secretory pathway (PMID: 9472029; 10359607).

Notable Publications

Author	Pubmed ID	Journal	Application
Shulin Li	34561617	Cell Res	WB, CoIP
Xihua Yue	34493279	BMC Biol	WB
Gaoda Ju	34635011	Bioengineered	WB, IHC

Storage

Storage:

Store at -20°C. Stable for one year after shipment.

Storage Buffer:

PBS with 0.02% sodium azide and 50% glycerol pH 7.3.

Aliquoting is unnecessary for -20°C storage

*** 20ul sizes contain 0.1% BSA

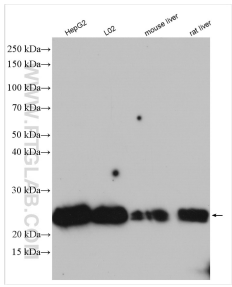
For technical support and original validation data for this product please contact:

T: 1 (888) 4PTGLAB (1-888-478-4522) (toll free in USA), or 1(312) 455-8498 (outside USA)

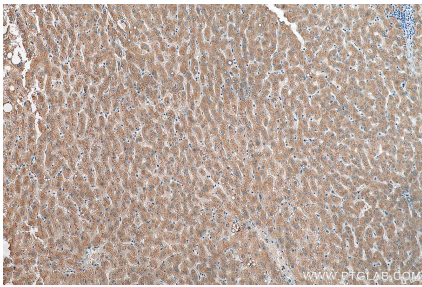
E: proteintech@ptglab.com
W: ptglab.com

This product is exclusively available under Proteintech Group brand and is not available to purchase from any other manufacturer.

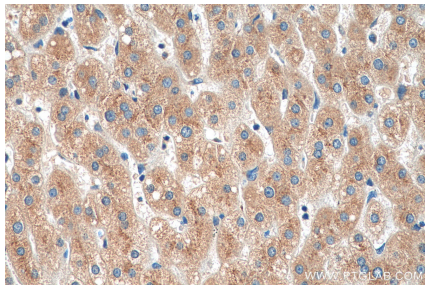
Selected Validation Data



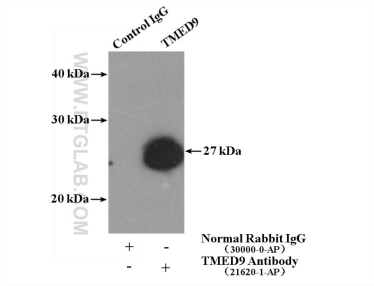
Various lysates were subjected to SDS PAGE followed by western blot with 21620-1-AP (TMED9 antibody) at dilution of 1:4000 incubated at room temperature for 1.5 hours.



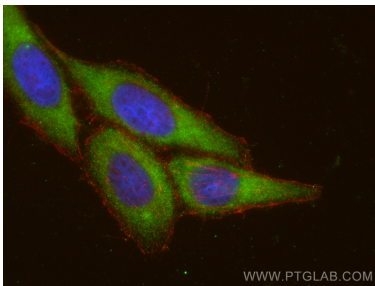
Immunohistochemical analysis of paraffin-embedded human liver tissue slide using 21620-1-AP (TMED9 antibody) at dilution of 1:200 (under 10x lens). Heat mediated antigen retrieval with Tris-EDTA buffer (pH 9.0).



Immunohistochemical analysis of paraffin-embedded human liver tissue slide using 21620-1-AP (TMED9 antibody) at dilution of 1:200 (under 40x lens). Heat mediated antigen retrieval with Tris-EDTA buffer (pH 9.0).



IP result of anti-TMED9 (IP:21620-1-AP, 4ug; Detection:21620-1-AP 1:500) with mouse liver tissue lysate 4000ug.



Immunofluorescent analysis of (-20°C Ethanol) fixed HepG2 cells using TMED9 antibody (21620-1-AP) at dilution of 1:200 and CoraLite®488-Conjugated Goat Anti-Rabbit IgG(H+L), CL594-phalloidin (red).