

For Research Use Only

PATL1 Polyclonal antibody

Catalog Number: 21631-1-AP

Featured Product



Basic Information

Catalog Number:

21631-1-AP

Size:

150ul, Concentration: 300 ug/ml by Nanodrop and 233 ug/ml by Bradford method using BSA as the standard;

Source:

Rabbit

Isotype:

IgG

Immunogen Catalog Number:

AG16247

GenBank Accession Number:

BC109038

GeneID (NCBI):

219988

UNIPROT ID:

Q86TB9

Full Name:

protein associated with topoisomerase II homolog 1 (yeast)

Calculated MW:

770 aa, 87 kDa

Observed MW:

87 kDa

Purification Method:

Antigen affinity purification

Recommended Dilutions:

WB 1:500-1:2000

IP 0.5-4.0 ug for 1.0-3.0 mg of total protein lysate

Applications

Tested Applications:

WB, IP, ELISA

Species Specificity:

human

Positive Controls:

WB : MCF-7 cells, HeLa cells, K-562 cells

IP : K-562 cells,

Background Information

Patellin1 (PATL1) is a human homolog to yeast P body component Pat1, localizes to P bodies and is required for P body formation. Furthermore, Pat1 is the only decapping activator protein that, besides interacting with deadenylated mRNAs, also binds to eIF4G-, eIF4E- and Pab1p-associated polyadenylated mRNA and locates to polysomes.

Storage

Storage:

Store at -20°C. Stable for one year after shipment.

Storage Buffer:

PBS with 0.02% sodium azide and 50% glycerol pH 7.3.

Aliquoting is unnecessary for -20°C storage

*** 20ul sizes contain 0.1% BSA

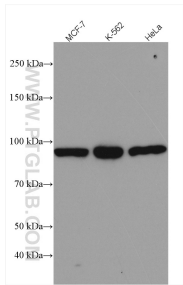
For technical support and original validation data for this product please contact:

T: 1 (888) 4PTGLAB (1-888-478-4522) (toll free in USA), or 1(312) 455-8498 (outside USA)

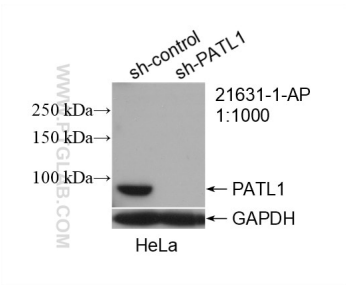
E: proteintech@ptglab.com
W: ptglab.com

This product is exclusively available under Proteintech Group brand and is not available to purchase from any other manufacturer.

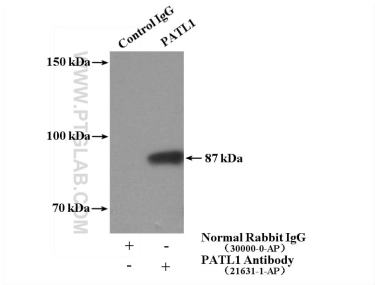
Selected Validation Data



Various lysates were subjected to SDS PAGE followed by western blot with 21631-1-AP (PATL1 antibody) at dilution of 1:1000 incubated at room temperature for 1.5 hours.



WB result of PATL1 antibody (21631-1-AP; 1:1000; incubated at room temperature for 1.5 hours) with sh-Control and sh-PATL1 transfected HeLa cells.



IP result of anti-PATL1 (IP:21631-1-AP, 4ug; Detection:21631-1-AP 1:300) with K-562 cells lysate 3320ug.