

For Research Use Only

# KIF5B Polyclonal antibody

Catalog Number: 21632-1-AP

Featured Product

28 Publications



## Basic Information

### Catalog Number:

21632-1-AP

### Size:

150ul, Concentration: 800 ug/ml by Nanodrop;

### Source:

Rabbit

### Isotype:

IgG

### Immunogen Catalog Number:

AG16250

### GenBank Accession Number:

BC126279

### GeneID (NCBI):

3799

### UNIPROT ID:

P33176

### Full Name:

kinesin family member 5B

### Calculated MW:

963 aa, 110 kDa

### Observed MW:

110-120 kDa

### Purification Method:

Antigen affinity purification

### Recommended Dilutions:

WB: 1:2000-1:16000

IP: 0.5-4.0 ug for 1.0-3.0 mg of total protein lysate

IHC: 1:20-1:200

IF/ICC: 1:200-1:800

## Applications

### Tested Applications:

WB, IHC, IF/ICC, IP, ELISA

### Cited Applications:

WB, IHC, IF, IP, CoIP

### Species Specificity:

human, mouse, rat

### Cited Species:

human, mouse, rat, pig, monkey

**Note-IHC: suggested antigen retrieval with TE buffer pH 9.0; (\*) Alternatively, antigen retrieval may be performed with citrate buffer pH 6.0**

### Positive Controls:

**WB:** A549 cells, HeLa cells, HepG2 cells, Jurkat cells, mouse brain, mouse heart, rat brain

**IP:** HepG2 cells,

**IHC:** human kidney tissue, human skin tissue

**IF/ICC:** HepG2 cells,

## Background Information

KIF5B, also known as KINH, KNS1, belongs to the Kinesin-1 family. KIF5B contains three structural domains: a globular N-terminal motor domain, a central alpha-helical rod domain, and a globular C-terminal domain. During the G2 phase of the cell cycle in a BICD2-dependent manner, KIF5B antagonizes the dynein function and drives the separation of nuclei and centrosomes (PMID: 20386726). KIF5B drives the polarization of cytoplasmic granules and microtubule-organizing centers (MTOCs) toward the immune synapse between effector NK lymphocytes and target cells (KIF5B:24088571).

## Notable Publications

Author	Pubmed ID	Journal	Application
Isabelle Munoz	27810912	J Cell Biol	WB, IF
Yushi Katsuyama	36243587	J Dermatol Sci	WB
Yiyuan Kang	34772551	J Hazard Mater	IP

## Storage

### Storage:

Store at -20°C. Stable for one year after shipment.

### Storage Buffer:

PBS with 0.02% sodium azide and 50% glycerol, pH7.3

Aliquoting is unnecessary for -20°C storage

\*\*\* 20ul sizes contain 0.1% BSA

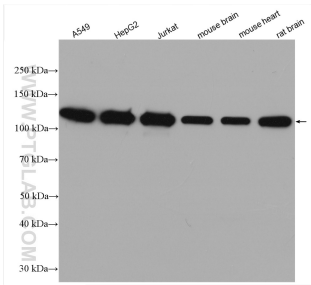
For technical support and original validation data for this product please contact:

T: 1 (888) 4PTGLAB (1-888-478-4522) (toll free in USA), or 1(312) 455-8498 (outside USA)

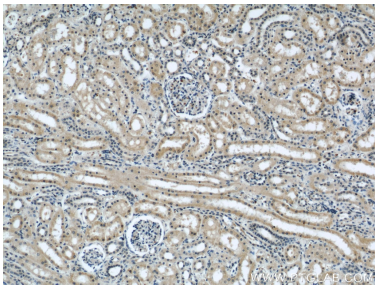
E: proteintech@ptglab.com  
W: ptglab.com

This product is exclusively available under Proteintech Group brand and is not available to purchase from any other manufacturer.

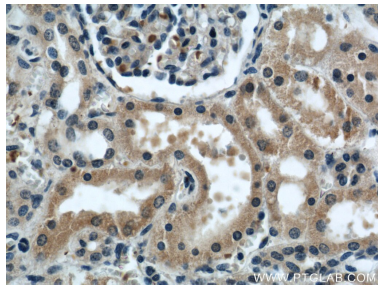
Selected Validation Data



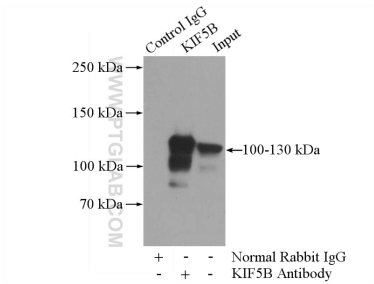
Various lysates were subjected to SDS PAGE followed by western blot with 21632-1-AP (KIF5B antibody) at dilution of 1:8000 incubated at room temperature for 1.5 hours.



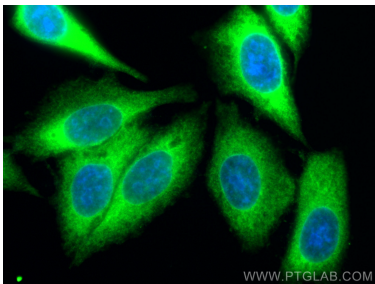
Immunohistochemical analysis of paraffin-embedded human kidney using 21632-1-AP (KIF5B antibody) at dilution of 1:100 (under 10x lens).



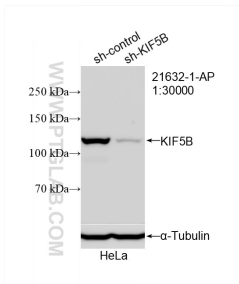
Immunohistochemical analysis of paraffin-embedded human kidney using 21632-1-AP (KIF5B antibody) at dilution of 1:100 (under 40x lens).



IP result of anti-KIF5B (IP:21632-1-AP, 5ug; Detection:21632-1-AP 1:2000) with HepG2 cells lysate 3600ug.



Immunofluorescent analysis of (-20°C Ethanol) fixed HepG2 cells using KIF5B antibody (21632-1-AP) at dilution of 1:400 and Coralite®488-Conjugated Goat Anti-Rabbit IgG(H+L).



WB result of KIF5B antibody (21632-1-AP; 1:30000; incubated at room temperature for 1.5 hours) with sh-Control and sh-KIF5B transfected HeLa cells.