

For Research Use Only

# RPLP1 Polyclonal antibody

Catalog Number: 21636-1-AP

Featured Product

4 Publications



## Basic Information

<b>Catalog Number:</b> 21636-1-AP	<b>GenBank Accession Number:</b> BC003369	<b>Purification Method:</b> Antigen affinity purification
<b>Size:</b> 150ul , Concentration: 400 µg/ml by Nanodrop;	<b>GeneID (NCBI):</b> 6176	<b>Recommended Dilutions:</b> WB 1:500-1:2000 IHC 1:20-1:200 IF 1:20-1:200
<b>Source:</b> Rabbit	<b>Full Name:</b> ribosomal protein, large, P1	
<b>Isotype:</b> IgG	<b>Calculated MW:</b> 12 kDa	
<b>Immunogen Catalog Number:</b> AG16268	<b>Observed MW:</b> 15-20 kDa	

## Applications

<b>Tested Applications:</b> IF, IHC, WB, ELISA	<b>Positive Controls:</b> WB : HeLa cells, HepG2 cells
<b>Cited Applications:</b> IHC, WB	<b>IHC :</b> human colon tissue, human kidney tissue
<b>Species Specificity:</b> human, mouse	<b>IF :</b> HepG2 cells,
<b>Cited Species:</b> human, mouse, pig	

**Note-IHC: suggested antigen retrieval with TE buffer pH 9.0; (\*) Alternatively, antigen retrieval may be performed with citrate buffer pH 6.0**

## Background Information

60S acidic ribosomal protein P1 (RRP1) is a 114 amino acid protein, which belongs to the ribosomal protein L12P family. RRP1 plays an important role in the elongation step of protein synthesis. The molecular weight of modified RRP1 is 15-20 kDa.

## Notable Publications

Author	Pubmed ID	Journal	Application
Zahraa Alali	31899515	Mol Hum Reprod	WB
Xinhui Du	37970363	Am J Cancer Res	WB,IHC
Riley Peterson	36769010	Int J Mol Sci	WB

## Storage

**Storage:**  
Store at -20°C. Stable for one year after shipment.  
**Storage Buffer:**  
PBS with 0.02% sodium azide and 50% glycerol pH 7.3.  
Aliquoting is unnecessary for -20°C storage

\*\*\* 20ul sizes contain 0.1% BSA

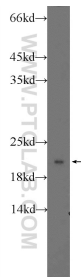
For technical support and original validation data for this product please contact:

T: 1 (888) 4PTGLAB (1-888-478-4522) (toll free in USA), or 1(312) 455-8498 (outside USA)

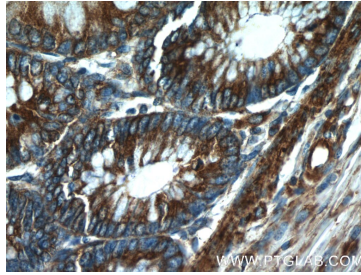
E: proteintech@ptglab.com  
W: ptglab.com

This product is exclusively available under Proteintech Group brand and is not available to purchase from any other manufacturer.

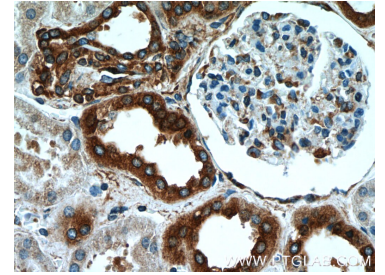
## Selected Validation Data



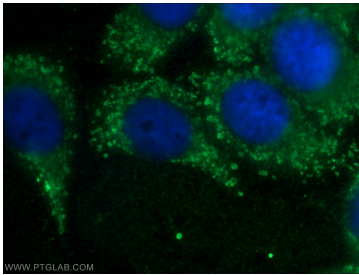
HeLa cells were subjected to SDS PAGE followed by western blot with 21636-1-AP (RPLP1 Antibody) at dilution of 1:1000 incubated at room temperature for 1.5 hours.



Immunohistochemical analysis of paraffin-embedded human colon tissue slide using 21636-1-AP (RPLP1 Antibody) at dilution of 1:50 (under 40x lens).



Immunohistochemical analysis of paraffin-embedded human kidney tissue slide using 21636-1-AP (RPLP1 Antibody) at dilution of 1:50 (under 40x lens).



Immunofluorescent analysis of HepG2 cells using 21636-1-AP (RPLP1 antibody) at dilution of 1:50 and Alexa Fluor 488-conjugated AffiniPure Goat Anti-Rabbit IgG(H+L).