

For Research Use Only

# GBX2 Polyclonal antibody

Catalog Number: 21639-1-AP

Featured Product

3 Publications



## Basic Information

Catalog Number:

21639-1-AP

Size:

150ul, Concentration: 900 ug/ml by Nanodrop;

Source:

Rabbit

Isotype:

IgG

Immunogen Catalog Number:

AG16288

GenBank Accession Number:

BC137448

GeneID (NCBI):

2637

UNIPROT ID:

P52951

Full Name:

gastrulation brain homeobox 2

Calculated MW:

348 aa, 37 kDa

Observed MW:

33-37 kDa

Purification Method:

Antigen affinity purification

Recommended Dilutions:

WB 1:500-1:1000

IP 0.5-4.0 ug for 1.0-3.0 mg of total protein lysate

IF/ICC 1:200-1:800

## Applications

Tested Applications:

WB, IF/ICC, IP, ELISA

Cited Applications:

WB, IF, ChIP

Species Specificity:

human, mouse

Cited Species:

human

Positive Controls:

WB: mouse stomach tissue, HeLa cells

IP: HeLa cells,

IF/ICC: HeLa cells,

## Background Information

Homeobox protein GBX-2 (GBX-2) is a homeobox gene essential for normal development of the midbrain and the anterior hindbrain. It mainly expressed in the brain, and located in nucleoplasm. It is presumably a transcription factor that is likely to regulate the expression of genes involved in establishing early A/P pattern in the neural plate (PMID: 9247335).

## Notable Publications

Author	Pubmed ID	Journal	Application
Yaoyao Xiong	35672622	Funct Integr Genomics	WB, ChIP
Xiwen Li	32618493	RNA Biol	ChIP
David Shin	38382530	Cell Stem Cell	IF

## Storage

Storage:

Store at -20°C. Stable for one year after shipment.

Storage Buffer:

PBS with 0.02% sodium azide and 50% glycerol pH 7.3.

Aliquoting is unnecessary for -20°C storage

\*\*\* 20ul sizes contain 0.1% BSA

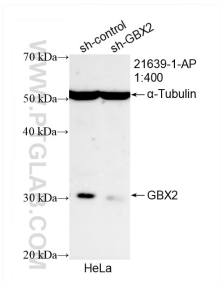
For technical support and original validation data for this product please contact:

T: 1 (888) 4PTGLAB (1-888-478-4522) (toll free in USA), or 1(312) 455-8498 (outside USA)

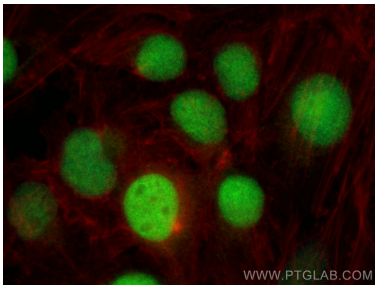
E: [proteintech@ptglab.com](mailto:proteintech@ptglab.com)  
W: [ptglab.com](http://ptglab.com)

This product is exclusively available under Proteintech Group brand and is not available to purchase from any other manufacturer.

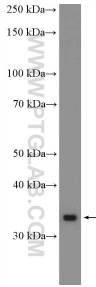
Selected Validation Data



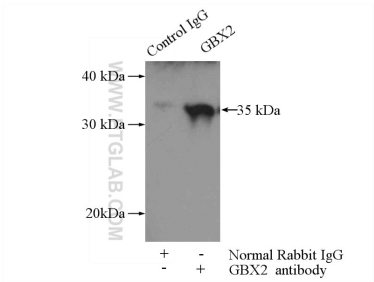
WB result of GBX2 antibody (21639-1-AP; 1:400; incubated at room temperature for 1.5 hours) with sh-Control and sh-GBX2 transfected HeLa cells.



Immunofluorescent analysis of (4% PFA) fixed HeLa cells using GBX2 antibody (21639-1-AP) at dilution of 1:400 and CoraLite®488-Conjugated Goat Anti-Rabbit IgG(H+L) (SA00013-2), CL594-Phalloidin (red).



mouse stomach tissue were subjected to SDS PAGE followed by western blot with 21639-1-AP (GBX2 Antibody) at dilution of 1:600 incubated at room temperature for 1.5 hours.



IP result of anti-GBX2 (IP:21639-1-AP, 4ug; Detection:21639-1-AP 1:300) with HeLa cells lysate 3000ug.