

For Research Use Only

ROCK2(middle) Polyclonal antibody



Catalog Number: 21645-1-AP

Featured Product

17 Publications

Basic Information

Catalog Number: 21645-1-AP	GenBank Accession Number: BC111801	Purification Method: Antigen affinity purification
Size: 150ul, Concentration: 700 µg/ml by Nanodrop and 520 µg/ml by Bradford method using BSA as the standard;	GeneID (NCBI): 9475	Recommended Dilutions: WB 1:1000-1:4000 IP 0.5-4.0 ug for IP and 1:500-1:1000
Source: Rabbit	Full Name: Rho-associated, coiled-coil containing protein kinase 2	for WB IHC 1:50-1:500 IF 1:50-1:500
Isotype: IgG	Calculated MW: 77 kDa, 161 kDa	
Immunogen Catalog Number: AG16330	Observed MW: 161 kDa	

Applications

Tested Applications:

IF, IHC, IP, WB, ELISA

Cited Applications:

IF, IHC, IP, WB

Species Specificity:

human, mouse, rat

Cited Species:

human, rat, mouse

Positive Controls:

WB: HT-1080 cells, mouse brain tissue, HeLa cells, mouse lung tissue, MCF-7 cells, mouse liver tissue, L02 cells

IP: HeLa cells,

IHC: human liver tissue,

IF: HepG2 cells, Hela cells

Note-IHC: suggested antigen retrieval with TE buffer pH 9.0; (*) Alternatively, antigen retrieval may be performed with citrate buffer pH 6.0

Background Information

ROCK2 is a serine/threonine kinase that regulates cytokinesis, smooth muscle contraction, the formation of actin stress fibers and focal adhesions, and the activation of the c-fos serum response element. It is an isozyme of ROCK1, is a target for the small GTPase Rho. ROCK2 is localized in both cytoplasm and nucleus, and the nucleus-localized ROCK2 can target p300 for phosphorylation to regulate its acetyltransferase activity (PMID:16574662).

Notable Publications

Author	Pubmed ID	Journal	Application
Da Huang	25251472	Biochem Biophys Res Commun	WB
K Liu	31610097	Andrology	WB, IHC
Kathryn N Becker	35563863	Cells	WB

Storage

Storage:

Store at -20°C. Stable for one year after shipment.

Storage Buffer:

PBS with 0.02% sodium azide and 50% glycerol pH 7.3.

Aliquoting is unnecessary for -20°C storage

*** 20ul sizes contain 0.1% BSA

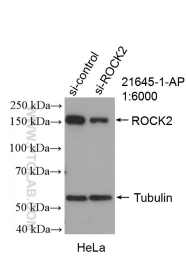
For technical support and original validation data for this product please contact:

T: 1 (888) 4PTGLAB (1-888-478-4522) (toll free in USA), or 1(312) 455-8498 (outside USA)

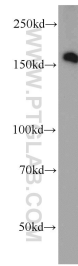
E: proteintech@ptglab.com
W: ptglab.com

This product is exclusively available under Proteintech Group brand and is not available to purchase from any other manufacturer.

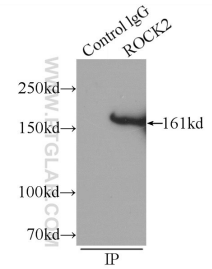
Selected Validation Data



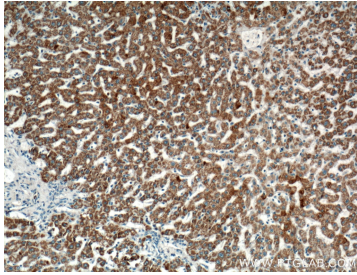
WB result of ROCK2(middle) antibody (21645-1-AP; 1:6000; incubated at room temperature for 1.5 hours) with sh-Control and sh-ROCK2(middle) transfected HeLa cells.



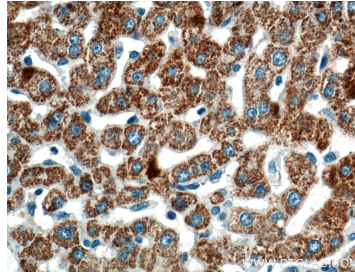
HT-1080 cells were subjected to SDS PAGE followed by western blot with 21645-1-AP (ROCK2(middle) antibody) at dilution of 1:1000 incubated at room temperature for 1.5 hours.



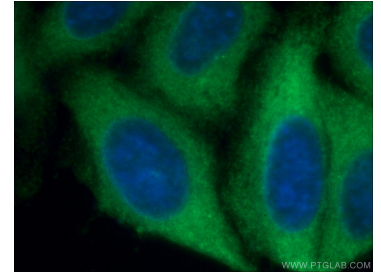
IP Result of anti-ROCK2(middle) (IP:21645-1-AP, 5µg; Detection:21645-1-AP 1:700) with HeLa cells lysate 1320µg.



Immunohistochemical analysis of paraffin-embedded human liver tissue slide using 21645-1-AP (ROCK2(middle) antibody) at dilution of 1:200 (under 10x lens).



Immunohistochemical analysis of paraffin-embedded human liver tissue slide using 21645-1-AP (ROCK2(middle) antibody) at dilution of 1:200 (under 40x lens).



Immunofluorescent analysis of (-20°C Ethanol) fixed HepG2 cells using 21645-1-AP (ROCK2(middle) antibody) at dilution of 1:50 and Alexa Fluor 488-conjugated AffiniPure Goat Anti-Rabbit IgG(H+L).