

For Research Use Only

RHBDL3 Polyclonal antibody

Catalog Number: 21671-1-AP



Basic Information

Catalog Number: 21671-1-AP	GenBank Accession Number: BC100975	Purification Method: Antigen affinity purification
Size: 150ul , Concentration: 1100 ug/ml by Nanodrop;	GeneID (NCBI): 162494	Recommended Dilutions: WB 1:1000-1:8000
Source: Rabbit	UNIPROT ID: P58872	
Isotype: IgG	Full Name: rhomboid, veinlet-like 3 (Drosophila)	
Immunogen Catalog Number: AG16499	Calculated MW: 404 aa, 45 kDa	
	Observed MW: 40 kDa	

Applications

Tested Applications: WB, ELISA	Positive Controls: WB : SH-SY5Y cells, mouse brain tissue, rat brain tissue
Species Specificity: human	

Background Information

RHBDL3 (Rhomboid-related protein 3) is involved in a process known as regulated intramembrane proteolysis (RIP), where proteins are cleaved within the membrane to release functional polypeptides from their membrane anchors. It is expressed in several structures, including the central nervous system, embryo ectoderm, reproductive system, sensory organ, and thymus. RHBDL3 is also a prognostic marker in Glioblastoma multiforme, indicating its potential role in cancer-related pathways. It is expressed in various cell lines, particularly in those related to neuronal function and visual perception, with low cancer specificity.

Storage

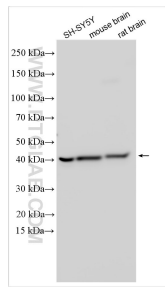
Storage:
Store at -20°C. Stable for one year after shipment.
Storage Buffer:
PBS with 0.02% sodium azide and 50% glycerol pH 7.3.
Aliquoting is unnecessary for -20°C storage

*** 20ul sizes contain 0.1% BSA

For technical support and original validation data for this product please contact:
T: 1 (888) 4PTGLAB (1-888-478-4522) (toll free in USA), or 1(312) 455-8498 (outside USA)
E: proteintech@ptglab.com
W: ptglab.com

This product is exclusively available under Proteintech Group brand and is not available to purchase from any other manufacturer.

Selected Validation Data



Various lysates were subjected to SDS PAGE followed by western blot with 21671-1-AP (RHBDL3 antibody) at dilution of 1:4000 incubated at room temperature for 1.5 hours.