

For Research Use Only

SIP1 Polyclonal antibody

Catalog Number: 21672-1-AP **4 Publications**



Basic Information

Catalog Number: 21672-1-AP	GenBank Accession Number: BC104968	Purification Method: Antigen affinity purification
Size: 150ul, Concentration: 700 µg/ml by Nanodrop and 300 µg/ml by Bradford method using BSA as the standard;	GeneID (NCBI): 8487	Recommended Dilutions: WB 1:500-1:2000 IP 0.5-4.0 ug for IP and 1:500-1:1000 for WB
Source: Rabbit	Full Name: survival of motor neuron protein interacting protein 1	
Isotype: IgG	Calculated MW: 280 aa, 32 kDa	
Immunogen Catalog Number: AG16500	Observed MW: 32-35 kDa	

Applications

Tested Applications: IP, WB, ELISA	Positive Controls: WB : HepG2 cells, HeLa cells, rat brain tissue
Cited Applications: WB	IP : HepG2 cells,
Species Specificity: human, mouse, rat	
Cited Species: human, mouse	

Background Information

Notable Publications

Author	Pubmed ID	Journal	Application
Yuhong Zhang	34628513	J Mol Med (Berl)	WB
Alessia Mirra	28515487	Sci Rep	WB
Yu-Shi Wang	32244350	Biomolecules	WB

Storage

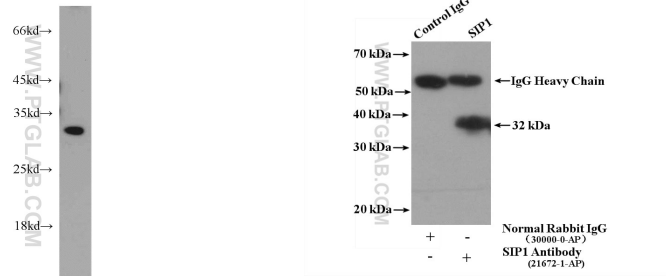
Storage:
Store at -20°C. Stable for one year after shipment.
Storage Buffer:
PBS with 0.02% sodium azide and 50% glycerol pH 7.3.
Aliquoting is unnecessary for -20°C storage

*** 20ul sizes contain 0.1% BSA

For technical support and original validation data for this product please contact:
T: 1 (888) 4PTGLAB (1-888-478-4522) (toll free in USA), or 1(312) 455-8498 (outside USA)
E: proteintech@ptglab.com
W: ptglab.com

This product is exclusively available under Proteintech Group brand and is not available to purchase from any other manufacturer.

Selected Validation Data



HepG2 cells were subjected to SDS PAGE followed by western blot with 21672-1-AP (SIP1 antibody) at dilution of 1:500 incubated at room temperature for 1.5 hours.

IP Result of anti-SIP1 (IP:21672-1-AP, 4ug; Detection:21672-1-AP 1:500) with HepG2 cells lysate 1000ug.