

For Research Use Only

PLEKHG6 Polyclonal antibody

Catalog Number: 21677-1-AP



Basic Information

Catalog Number:

21677-1-AP

Size:

150ul , Concentration: 510 ug/ml by Nanodrop;

Source:

Rabbit

Isotype:

IgG

Immunogen Catalog Number:

AG15886

GenBank Accession Number:

BC105961

GeneID (NCBI):

55200

UNIPROT ID:

Q3KR16

Full Name:

pleckstrin homology domain containing, family G (with RhoGef domain) member 6

Calculated MW:

790 aa, 89 kDa

Observed MW:

89 kDa

Purification Method:

Antigen affinity purification

Recommended Dilutions:

WB: 1:500-1:1000

Applications

Tested Applications:

WB, ELISA

Species Specificity:

human

Positive Controls:

WB : Caco-2 cells, MCF-7 cells

Background Information

PLEKHG6 is a previously unknown guanine nucleotide exchange factor (GEF) for RhoG. It localizes to the apical membrane of cells, a process that depends on its interaction with the membrane-cytoskeleton linker protein ezrin. This apical localization is essential for inducing morphological changes. Additionally, PLEKHG6 and ezrin are both necessary for macropinocytosis mediated by membrane ruffles. Finally, ezrin facilitates precise spatial regulation of RhoG activation at the apical surface of epithelial cells by recruiting components of the RhoG signaling pathway into a closely associated complex.

Storage

Storage:

Store at -20°C. Stable for one year after shipment.

Storage Buffer:

PBS with 0.02% sodium azide and 50% glycerol, pH7.3

Aliquoting is unnecessary for -20°C storage

*** 20ul sizes contain 0.1% BSA

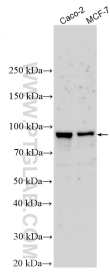
For technical support and original validation data for this product please contact:

T: 1 (888) 4PTGLAB (1-888-478-4522) (toll free in USA), or 1(312) 455-8498 (outside USA)

E: proteintech@ptglab.com
W: ptglab.com

This product is exclusively available under Proteintech Group brand and is not available to purchase from any other manufacturer.

Selected Validation Data



Various lysates were subjected to SDS PAGE followed by western blot with 21677-1-AP (PLEKHG6 antibody) at dilution of 1:800 incubated at room temperature for 1.5 hours.