

For Research Use Only

# Trehalase Polyclonal antibody

Catalog Number: 21685-1-AP

1 Publications



## Basic Information

Catalog Number:

21685-1-AP

Size:

150ul, Concentration: 350 ug/ml by Nanodrop;

Source:

Rabbit

Isotype:

IgG

Immunogen Catalog Number:

AG16246

GenBank Accession Number:

BC109206

GeneID (NCBI):

11181

UNIPROT ID:

O43280

Full Name:

trehalase (brush-border membrane glycoprotein)

Calculated MW:

583 aa, 67 kDa

Observed MW:

67-70 kDa

Purification Method:

Antigen Affinity purified

Recommended Dilutions:

WB: 1:500-1:3000

## Applications

Tested Applications:

WB, ELISA

Cited Applications:

WB

Species Specificity:

human, mouse

Cited Species:

mouse

Positive Controls:

WB: mouse small intestine tissue,

## Background Information

Trehalase is the enzyme hydrolyzing trehalose and belongs to the glycosyl hydrolase 37 family. In humans and most mammals, trehalase is found in the brush borders of the intestinal mucosa, kidney, liver, and blood plasma. Trehalases are conserved enzymes that catalyze the hydrolysis of one of two glycoside bonds of trehalose. With the exception of vertebrates where trehalase is required for the degradation of ingested trehalose, in other animal groups it is involved in diverse physiological processes including carbohydrate metabolism, resumption of growth in certain resting cells, germination of spores in fungi, recovery from stress conditions, etc (PMID: 25429048, PMID: 30628830).

## Notable Publications

Author	Pubmed ID	Journal	Application
Justyna Barut	35150790	Neurochem Int	WB

## Storage

Storage:

Store at -20°C. Stable for one year after shipment.

Storage Buffer:

PBS with 0.02% sodium azide and 50% glycerol, pH7.3

Aliquoting is unnecessary for -20°C storage

\*\*\* 20ul sizes contain 0.1% BSA

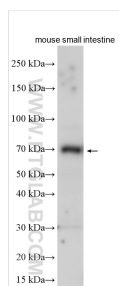
For technical support and original validation data for this product please contact:

T: 1 (888) 4PTGLAB (1-888-478-4522) (toll free in USA), or 1(312) 455-8498 (outside USA)

E: [proteintech@ptglab.com](mailto:proteintech@ptglab.com)  
W: [ptglab.com](http://ptglab.com)

This product is exclusively available under Proteintech Group brand and is not available to purchase from any other manufacturer.

## Selected Validation Data



Mouse small intestine tissue lysate were subjected to SDS PAGE followed by western blot with 21685-1-AP (Trehalase antibody) at dilution of 1:1500 incubated at room temperature for 1.5 hours.