

For Research Use Only

Trehalase Polyclonal antibody, PBS Only

Catalog Number: 21685-1-PBS



Basic Information

Catalog Number: 21685-1-PBS	GenBank Accession Number: BC109206	Purification Method: Antigen Affinity purified
Size: 100ug, Concentration: 1 mg/ml by Nanodrop;	GeneID (NCBI): 11181	
Source: Rabbit	UNIPROT ID: O43280	
Isotype: IgG	Full Name: trehalase (brush-border membrane glycoprotein)	
Immunogen Catalog Number: AG16246	Calculated MW: 583 aa, 67 kDa	
	Observed MW: 67-70 kDa	

Applications

Tested Applications:
WB, IF-P, Indirect ELISA

Species Specificity:
human, mouse

Background Information

Trehalase is the enzyme hydrolyzing trehalose and belongs to the glycosyl hydrolase 37 family. In humans and most mammals, trehalase is found in the brush borders of the intestinal mucosa, kidney, liver, and blood plasma. Trehalases are conserved enzymes that catalyze the hydrolysis of one of two glycoside bonds of trehalose. With the exception of vertebrates where trehalase is required for the degradation of ingested trehalose, in other animal groups it is involved in diverse physiological processes including carbohydrate metabolism, resumption of growth in certain resting cells, germination of spores in fungi, recovery from stress conditions, etc (PMID: 25429048, PMID: 30628830).

Storage

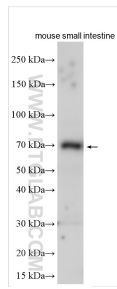
Storage:
Store at -80°C.

Storage Buffer:
PBS only, pH7.3

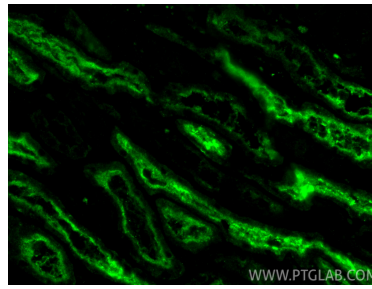
For technical support and original validation data for this product please contact:
T: 1 (888) 4PTGLAB (1-888-478-4522) (toll free in USA), or 1(312) 455-8498 (outside USA) E: proteintech@ptglab.com
W: ptglab.com

This product is exclusively available under Proteintech Group brand and is not available to purchase from any other manufacturer.

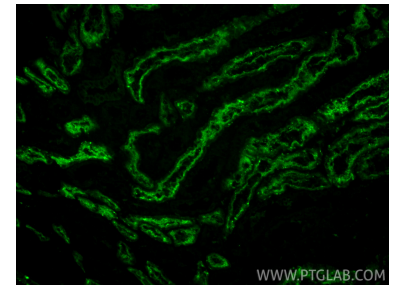
Selected Validation Data



Mouse small intestine tissue lysate were subjected to SDS PAGE followed by western blot with 21685-1-AP (Trehalase antibody) at dilution of 1:1500 incubated at room temperature for 1.5 hours. This data was developed using the same antibody clone with 21685-1-PBS in a different storage buffer formulation.



Immunofluorescent analysis of (4% PFA) fixed paraffin-embedded human kidney tissue using Trehalase antibody (21685-1-AP) at dilution of 1:200 and CoraLite® 488-Conjugated Goat Anti-Rabbit IgG(H+L) (SA00013-2). Heat mediated antigen retrieval with Tris-EDTA buffer (pH 9.0). This data was developed using the same antibody clone with 21685-1-PBS in a different storage buffer formulation.



Immunofluorescent analysis of (4% PFA) fixed paraffin-embedded human kidney tissue using Trehalase antibody (21685-1-AP) at dilution of 1:200 and CoraLite® 488-Conjugated Goat Anti-Rabbit IgG(H+L) (SA00013-2). Heat mediated antigen retrieval with Tris-EDTA buffer (pH 9.0). This data was developed using the same antibody clone with 21685-1-PBS in a different storage buffer formulation.