

For Research Use Only

# Neurofibromin 2 Polyclonal antibody, PBS Only

Catalog Number: 21686-1-PBS

Featured Product



## Basic Information

**Catalog Number:**

21686-1-PBS

**Size:**

100ug, Concentration: 1 mg/ml by  
Nanodrop;

**Source:**

Rabbit

**Isotype:**

IgG

**Immunogen Catalog Number:**

AG16265

**GenBank Accession Number:**

BC020257

**GeneID (NCBI):**

4771

**UNIPROT ID:**

P35240

**Full Name:**

neurofibromin 2 (merlin)

**Calculated MW:**

595 aa, 70 kDa

**Observed MW:**

66-70 kDa

**Purification Method:**

Antigen affinity purification

## Applications

**Tested Applications:**

WB, IHC, IF/ICC, IP, ELISA

**Species Specificity:**

human, mouse, rat, canine

## Background Information

Neurofibromatosis 2 (NF2) tumor suppressor protein-merlin is involved in Hippo/SWH signaling pathway that associated with tumor suppression by restricting proliferation and promoting apoptosis. It has been reported that merlin can change to phosphorylation form which inactivates merlin tumor suppressive abilities at serine 518 induced by Rac effector p21-activated kinase 2. The mutation of the NF2 tumor suppressor gene may lead to nervous system tumors, mesotheliomas and metastatic tumors.

## Storage

**Storage:**

Store at -80°C.

**Storage Buffer:**

PBS only, pH7.3

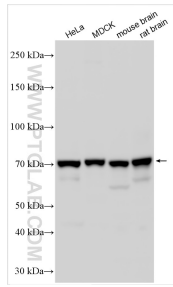
For technical support and original validation data for this product please contact:

T: 1 (888) 4PTGLAB (1-888-478-4522) (toll free  
in USA), or 1(312) 455-8498 (outside USA)

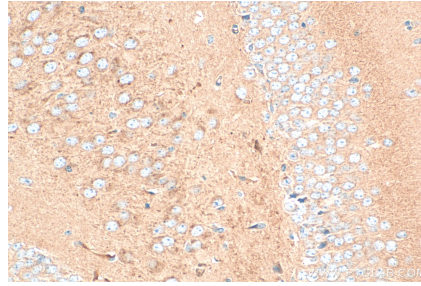
E: [proteintech@ptglab.com](mailto:proteintech@ptglab.com)  
W: [ptglab.com](http://ptglab.com)

**This product is exclusively available under Proteintech Group brand and is not available to purchase from any other manufacturer.**

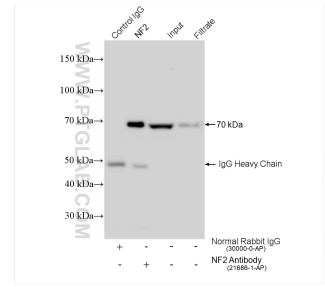
## Selected Validation Data



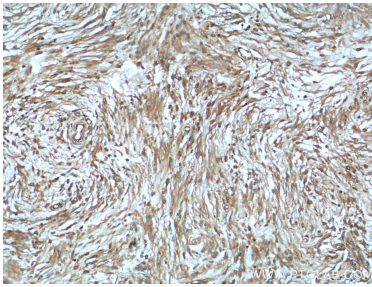
Various lysates were subjected to SDS PAGE followed by western blot with 21686-1-AP (NF2 antibody) at dilution of 1:8000 incubated at room temperature for 1.5 hours. This data was developed using the same antibody clone with 21686-1-PBS in a different storage buffer formulation.



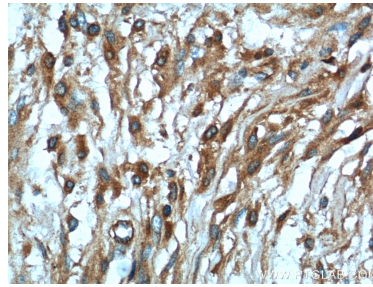
Immunohistochemical analysis of paraffin-embedded mouse brain tissue slide using 21686-1-AP (NF2 antibody) at dilution of 1:1500 (under 40x lens). Heat mediated antigen retrieval with Tris-EDTA buffer (pH 9.0). This data was developed using the same antibody clone with 21686-1-PBS in a different storage buffer formulation.



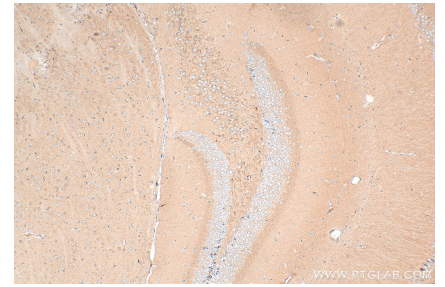
IP result of anti-NF2 (IP:21686-1-AP, 4ug; Detection:21686-1-AP 1:5000) with HeLa cells lysate 1560 ug. This data was developed using the same antibody clone with 21686-1-PBS in a different storage buffer formulation.



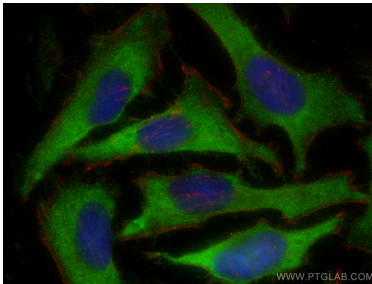
Immunohistochemical analysis of paraffin-embedded human meningioma tissue slide using 21686-1-AP (NF2 Antibody) at dilution of 1:50 (under 10x lens). This data was developed using the same antibody clone with 21686-1-PBS in a different storage buffer formulation.



Immunohistochemical analysis of paraffin-embedded human meningioma tissue slide using 21686-1-AP (NF2 Antibody) at dilution of 1:50 (under 40x lens). This data was developed using the same antibody clone with 21686-1-PBS in a different storage buffer formulation.



Immunohistochemical analysis of paraffin-embedded mouse brain tissue slide using 21686-1-AP (NF2 antibody) at dilution of 1:1500 (under 10x lens). Heat mediated antigen retrieval with Tris-EDTA buffer (pH 9.0). This data was developed using the same antibody clone with 21686-1-PBS in a different storage buffer formulation.



Immunofluorescent analysis of (-20°C Ethanol) fixed HeLa cells using NF2 antibody (21686-1-AP) at dilution of 1:400 and CoraLite®488-Conjugated AffiniPure Goat Anti-Rabbit IgG(H+L), CL594-Phalloidin (red). This data was developed using the same antibody clone with 21686-1-PBS in a different storage buffer formulation.