

For Research Use Only

# NEDD4 Polyclonal antibody

Catalog Number: 21698-1-AP

Featured Product

53 Publications



## Basic Information

**Catalog Number:**

21698-1-AP

**Size:**

150ul, Concentration: 800 ug/ml by Nanodrop;

**Source:**

Rabbit

**Isotype:**

IgG

**Immunogen Catalog Number:**

AG16291

**GenBank Accession Number:**

BC152452

**GeneID (NCBI):**

4734

**UNIPROT ID:**

P46934

**Full Name:**

neural precursor cell expressed, developmentally down-regulated 4

**Calculated MW:**

1319 aa, 149 kDa

**Observed MW:**

115 kDa

**Purification Method:**

Antigen affinity purification

**Recommended Dilutions:**

WB 1:1000-1:8000

IP 0.5-4.0 ug for 1.0-3.0 mg of total protein lysate

IHC 1:50-1:500

IF/ICC 1:200-1:800

## Applications

**Tested Applications:**

WB, IHC, IF/ICC, IP, ELISA

**Cited Applications:**

WB, IHC, IF, IP, CoIP

**Species Specificity:**

human, mouse, rat, monkey

**Cited Species:**

human, mouse, rat, chicken

**Positive Controls:**

WB: A549 cells, C6 cells, HeLa cells, HT-1080 cells, HEK-293 cells, Jurkat cells, NIH/3T3 cells, COS-7 cells

IP: C6 cells,

IHC: human breast cancer tissue, human lung cancer tissue, human liver tissue

IF/ICC: U2OS cells,

**Note-IHC: suggested antigen retrieval with TE buffer pH 9.0; (\*) Alternatively, antigen retrieval may be performed with citrate buffer pH 6.0**

## Background Information

NEDD4 and similar proteins discovered subsequently became a family of HECT ligases, comprising 9 human proteins including NEDD4, NEDD4-2 (NEDD4L), ITCH, SMURF1, SMURF2, WWP1, WWP2, NEDL1 and NEDL2 (PMID: 23545411). NEDD4 is a highly evolutionarily conserved protein from yeast to man, and was initially cloned as a highly expressed gene in the early embryonic brain (PMID: 35328067). NEDD4 is frequently overexpressed in many different types of cancer, and decreased levels of NEDD4 can also be associated with cancer. It can be a potential therapeutic target for the treatment of human cancer.(PMID: 25527121). The human NEDD4 gene is located on chromosome 15q21.3 and comprises 30 exons (HGNC:7727) shown to encode a ~120 kDa protein. Otherwise there is a 75 kDa isoform in addition to full length NEDD4 (PMID: 24907641).

## Notable Publications

Author	Pubmed ID	Journal	Application
Haichuan Wang	35232824	Cell Mol Gastroenterol Hepatol	IHC
Yiru Shao	35355403	J Cell Mol Med	WB,IHC
Jincheng Zhang	35271885	Virus Res	WB

## Storage

**Storage:**

Store at -20°C. Stable for one year after shipment.

**Storage Buffer:**

PBS with 0.02% sodium azide and 50% glycerol pH 7.3.

Aliquoting is unnecessary for -20°C storage

\*\*\* 20ul sizes contain 0.1% BSA

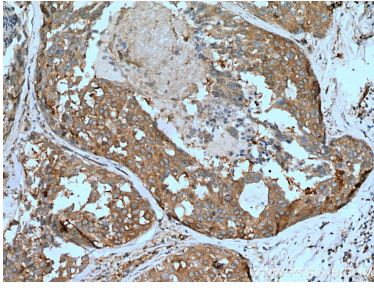
For technical support and original validation data for this product please contact:

T: 1 (888) 4PTGLAB (1-888-478-4522) (toll free in USA), or 1(312) 455-8498 (outside USA)

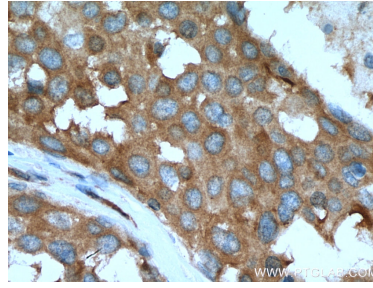
E: proteintech@ptglab.com  
W: ptglab.com

**This product is exclusively available under Proteintech Group brand and is not available to purchase from any other manufacturer.**

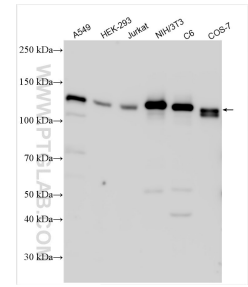
## Selected Validation Data



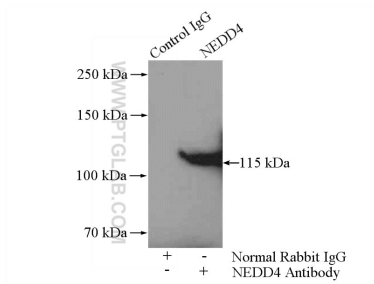
Immunohistochemical analysis of paraffin-embedded human breast cancer tissue slide using 21698-1-AP (NEDD4 antibody) at dilution of 1:200 (under 10x lens). Heat mediated antigen retrieval with Tris-EDTA buffer (pH 9.0).



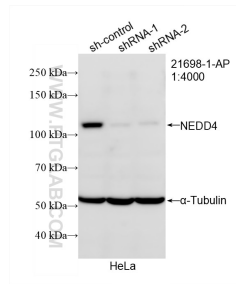
Immunohistochemical analysis of paraffin-embedded human breast cancer tissue slide using 21698-1-AP (NEDD4 antibody) at dilution of 1:200 (under 40x lens). Heat mediated antigen retrieval with Tris-EDTA buffer (pH 9.0).



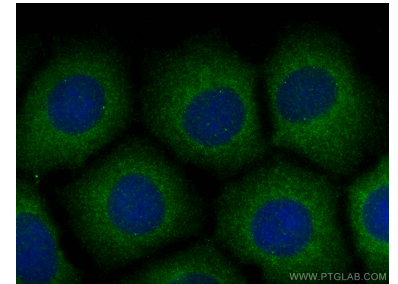
Various lysates were subjected to SDS PAGE followed by western blot with 21698-1-AP (NEDD4 antibody) at dilution of 1:4000 incubated at room temperature for 1.5 hours.



IP result of anti-NEDD4 (IP: 21698-1-AP, 4ug; Detection: 21698-1-AP 1:500) with C6 cells lysate 1600ug.



WB result of NEDD4 antibody (21698-1-AP; 1:4000; incubated at room temperature for 1.5 hours) with sh-Control and sh-NEDD4 transfected HeLa cells.



Immunofluorescent analysis of (-20°C Methanol) fixed U2OS cells using NEDD4 antibody (21698-1-AP) at dilution of 1:400 and CoraLite®488-Conjugated AffiniPure Goat Anti-Rabbit IgG(H+L).