

For Research Use Only

IRAK2 Polyclonal antibody

Catalog Number: 21700-1-AP



Basic Information

Catalog Number: 21700-1-AP	GenBank Accession Number: BC125184	Purification Method: Antigen affinity purification
Size: 150ul , Concentration: 620 ug/ml by Nanodrop;	GeneID (NCBI): 3656	Recommended Dilutions: WB: 1:500-1:2000
Source: Rabbit	UNIPROT ID: O43187	
Isotype: IgG	Full Name: interleukin-1 receptor-associated kinase 2	
Immunogen Catalog Number: AG16297	Calculated MW: 625 aa, 69 kDa	
	Observed MW: 62-75 kDa	

Applications

Tested Applications: WB, ELISA	Positive Controls: WB : HepG2 cells, HepG2, Jurkat, K-562, L02 cells
Species Specificity: human	

Background Information

IRAK2 (Interleukin-1 receptor-associated kinase 2) is a crucial protein involved in innate immune signaling and has diverse roles in various biological processes. IRAK2 belongs to the IRAK family of proteins, which share an N-terminal death domain (DD) that enables interactions with the DD-containing MyD88, and a central kinase domain (KD) (PMID: 24973222). IRAK2 has been implicated in various cancers. It is highly expressed in pancreatic cancer patients and is associated with poor prognosis. IRAK2 knockdown impairs pancreatic cancer cell proliferation (PMID: 37108068).

Storage

Storage:
Store at -20°C. Stable for one year after shipment.
Storage Buffer:
PBS with 0.02% sodium azide and 50% glycerol, pH7.3
Aliquoting is unnecessary for -20°C storage

*** 20ul sizes contain 0.1% BSA

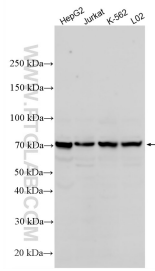
For technical support and original validation data for this product please contact:

T: 1 (888) 4PTGLAB (1-888-478-4522) (toll free in USA), or 1(312) 455-8498 (outside USA)

E: proteintech@ptglab.com
W: ptglab.com

This product is exclusively available under Proteintech Group brand and is not available to purchase from any other manufacturer.

Selected Validation Data



Various lysates were subjected to SDS PAGE followed by western blot with 21700-1-AP (IRAK2 antibody) at dilution of 1:1000 incubated at room temperature for 1.5 hours.