

For Research Use Only

CYP2A6 Polyclonal antibody

Catalog Number: 21721-1-AP **4 Publications**



Basic Information

Catalog Number: 21721-1-AP	GenBank Accession Number: BC096253	Purification Method: Antigen affinity purification
Size: 150ul, Concentration: 400 µg/ml by Nanodrop and 300 µg/ml by Bradford method using BSA as the standard;	GeneID (NCBI): 1548	Recommended Dilutions: WB 1:2000-1:10000 IHC 1:50-1:500
Source: Rabbit	Full Name: cytochrome P450, family 2, subfamily A, polypeptide 6	
Isotype: IgG	Calculated MW: 494 aa, 57 kDa	
Immunogen Catalog Number: AG16377	Observed MW: 50 kDa	

Applications

Tested Applications:
IHC, WB, ELISA

Cited Applications:
WB

Species Specificity:
human, mouse, rat

Cited Species:
human, mouse

Note-IHC: suggested antigen retrieval with TE buffer pH 9.0; (*) Alternatively, antigen retrieval may be performed with citrate buffer pH 6.0

Positive Controls:

WB: mouse liver tissue, HepG2 cells, mouse lung tissue, rat liver tissue

IHC: human liver tissue, human liver cancer tissue

Background Information

Notable Publications

Author	Pubmed ID	Journal	Application
Ashley A Untereiner	29061341	Biochem Pharmacol	WB
Shotaro Uehara	35416115	Xenobiotica	WB
Bayan Alakhtar	38164438	Front Toxicol	WB

Storage

Storage:

Store at -20°C. Stable for one year after shipment.

Storage Buffer:

PBS with 0.02% sodium azide and 50% glycerol pH 7.3.

Aliquoting is unnecessary for -20°C storage

***** 20ul sizes contain 0.1% BSA**

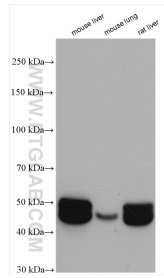
For technical support and original validation data for this product please contact:

T: 1 (888) 4PTGLAB (1-888-478-4522) (toll free in USA), or 1(312) 455-8498 (outside USA)

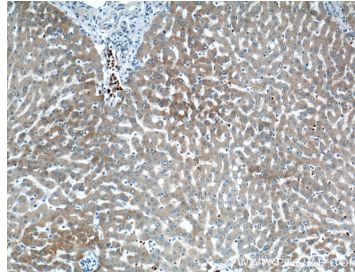
E: proteintech@ptglab.com
W: ptglab.com

This product is exclusively available under Proteintech Group brand and is not available to purchase from any other manufacturer.

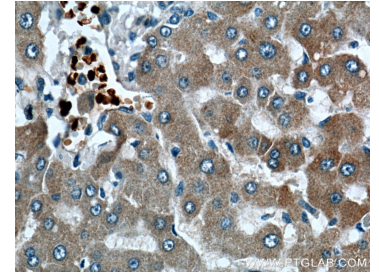
Selected Validation Data



Various lysates were subjected to SDS PAGE followed by western blot with 21721-1-AP (CYP2A6 antibody) at dilution of 1:5000 incubated at room temperature for 1.5 hours.



Immunohistochemical analysis of paraffin-embedded human liver tissue slide using 21721-1-AP (CYP2A6 Antibody) at dilution of 1:200 (under 10x lens).



Immunohistochemical analysis of paraffin-embedded human liver tissue slide using 21721-1-AP (CYP2A6 Antibody) at dilution of 1:200 (under 40x lens).