

For Research Use Only

GCM1 Polyclonal antibody

Catalog Number: 21724-1-AP **2 Publications**



Basic Information

Catalog Number: 21724-1-AP	GenBank Accession Number: BC096288	Purification Method: Antigen affinity purification
Size: 150ul , Concentration: 200 µg/ml by Nanodrop and 147 µg/ml by Bradford method using BSA as the standard;	GeneID (NCBI): 8521	Recommended Dilutions: WB 1:200-1:1000
Source: Rabbit	UNIPROT ID: Q9NP62	
Isotype: IgG	Full Name: glial cells missing homolog 1 (Drosophila)	
Immunogen Catalog Number: AG16383	Calculated MW: 436 aa, 49 kDa	
	Observed MW: 45-50 kDa	

Applications

Tested Applications: WB,ELISA	Positive Controls: WB : HepG2 cells, HeLa cells
Cited Applications: WB	
Species Specificity: human	
Cited Species: human	

Notable Publications

Author	Pubmed ID	Journal	Application
Wei Peng	33757527	Reprod Biol. Endocrinol	WB
Jiayi Wu	38317232	BMC Med	WB

Storage

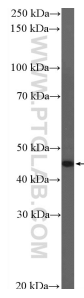
Storage:
Store at -20°C. Stable for one year after shipment.
Storage Buffer:
PBS with 0.02% sodium azide and 50% glycerol pH 7.3.
Aliquoting is unnecessary for -20°C storage

***** 20ul sizes contain 0.1% BSA**

For technical support and original validation data for this product please contact:
T: 1 (888) 4PTGLAB (1-888-478-4522) (toll free in USA), or 1(312) 455-8498 (outside USA) E: proteintech@ptglab.com
W: ptglab.com

This product is exclusively available under Proteintech Group brand and is not available to purchase from any other manufacturer.

Selected Validation Data



HepG2 cells were subjected to SDS PAGE followed by western blot with 21724-1-AP (GCM1 Antibody) at dilution of 1:300 incubated at room temperature for 1.5 hours.