

For Research Use Only

SLC15A1/PEPT1 Polyclonal antibody



Catalog Number: 21726-1-AP

1 Publications

Basic Information

Catalog Number: 21726-1-AP	GenBank Accession Number: BC096327	Purification Method: Antigen affinity purification
Size: 150ul , Concentration: 300 µg/ml by Nanodrop;	GeneID (NCBI): 6564	Recommended Dilutions: WB 1:500-1:2000
Source: Rabbit	Full Name: solute carrier family 15 (oligopeptide transporter), member 1	
Isotype: IgG	Calculated MW: 708 aa, 79 kDa	
Immunogen Catalog Number: AG16390	Observed MW: 70-80 kDa	

Applications

Tested Applications: WB, ELISA	Positive Controls: WB : COLO 320 cells, Caco-2 cells, HT-29 cells, MOLT-4 cells, mouse small intestine tissue
Cited Applications: IHC	
Species Specificity: human, mouse	
Cited Species: human	

Background Information

SLC15A1/PEPT1 is a peptide transporter that transports oligopeptides of 2 to 4 amino acids with a preference for dipeptides. PEPT1 mediates transepithelial transport of muramyl and N-formylated bacterial dipeptides contributing to recognition of pathogenic bacteria by the mucosal immune system. PEPT1 is primarily expressed in the small intestine (PMID: 22194420). PEPT1 is also expressed in distal colon in rodents and humans and contributes to water absorption. 71 kDa nonglycosylated PEPT1 protein can be detected (PMID: 23660505).

Notable Publications

Author	Pubmed ID	Journal	Application
Kumi Ogihara	28416355	Photodiagnosis Photodyn Ther	IHC

Storage

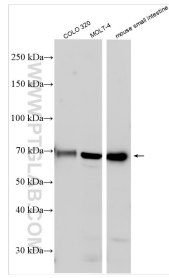
Storage:
Store at -20°C. Stable for one year after shipment.
Storage Buffer:
PBS with 0.02% sodium azide and 50% glycerol pH 7.3.
Aliquoting is unnecessary for -20°C storage

*** 20ul sizes contain 0.1% BSA

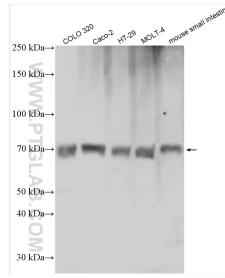
For technical support and original validation data for this product please contact:
T: 1 (888) 4PTGLAB (1-888-478-4522) (toll free in USA), or 1(312) 455-8498 (outside USA)
E: proteintech@ptglab.com
W: ptglab.com

This product is exclusively available under Proteintech Group brand and is not available to purchase from any other manufacturer.

Selected Validation Data



Various lysates were subjected to SDS PAGE followed by western blot with 21726-1-AP (SLC15A1 antibody) at dilution of 1:1000 incubated at room temperature for 1.5 hours.



Various lysates were subjected to SDS PAGE followed by western blot with 21726-1-AP (SLC15A1 antibody) at dilution of 1:1000 incubated at room temperature for 1.5 hours.