

For Research Use Only

IDE Polyclonal antibody

Catalog Number: 21728-1-AP

Featured Product

11 Publications



Basic Information

Catalog Number:

21728-1-AP

Size:

150ul, Concentration: 300 ug/ml by Nanodrop and 200 ug/ml by Bradford method using BSA as the standard;

Source:

Rabbit

Isotype:

IgG

Immunogen Catalog Number:

AG16392

GenBank Accession Number:

BC096336

GeneID (NCBI):

3416

UNIPROT ID:

P14735

Full Name:

Abeta degrading protease

Calculated MW:

1019 aa, 118 kDa

Observed MW:

100-120 kDa

Purification Method:

Antigen affinity purification

Recommended Dilutions:

WB 1:500-1:1000

IP 0.5-4.0 ug for 1.0-3.0 mg of total protein lysate

IHC 1:20-1:200

Applications

Tested Applications:

WB, IP, IHC, ELISA

Cited Applications:

WB, IHC

Species Specificity:

human

Cited Species:

human

Note-IHC: suggested antigen retrieval with TE buffer pH 9.0; (*) Alternatively, antigen retrieval may be performed with citrate buffer pH 6.0

Positive Controls:

WB : A2780 cells, HepG2 cells, HeLa cells, DU 145 cells

IP : HepG2 cells,

IHC : human kidney tissue, human liver tissue

Background Information

IDE (INS-degrading enzyme) belongs to the peptidase M16 family. It is also known as insulysin and is a 110-kD neutral metallopeptidase that can degrade a number of peptides, including INS and beta-amyloid (PMID:9830016). The reduction of IDE expression may be a risk factor for AD, and that IDE may interact with APOE status to affect beta-amyloid metabolism (PMID:12507914). It can exist as a homodimer and form higher oligomers (PMID:17613531). This antibody is specific to IDE.

Notable Publications

Author	Pubmed ID	Journal	Application
Ke-Wei Chang	30217465	Neurochem Int	WB
Chunling Yuan	30389579	Biochim Biophys Acta Mol Basis Dis	WB
Hui Zeng	32473218	Int J Biol Macromol	WB

Storage

Storage:

Store at -20°C. Stable for one year after shipment.

Storage Buffer:

PBS with 0.02% sodium azide and 50% glycerol pH 7.3.

Aliquoting is unnecessary for -20°C storage

*** 20ul sizes contain 0.1% BSA

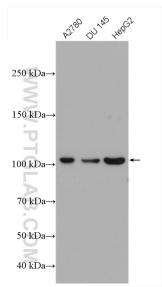
For technical support and original validation data for this product please contact:

T: 1 (888) 4PTGLAB (1-888-478-4522) (toll free in USA), or 1(312) 455-8498 (outside USA)

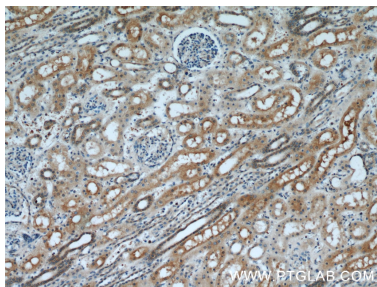
E: proteintech@ptglab.com
W: ptglab.com

This product is exclusively available under Proteintech Group brand and is not available to purchase from any other manufacturer.

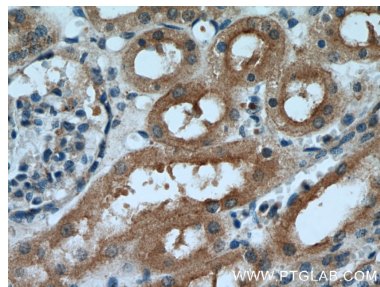
Selected Validation Data



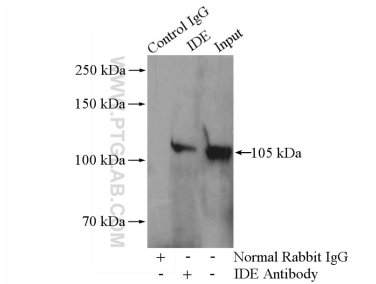
Various lysates were subjected to SDS PAGE followed by western blot with 21728-1-AP (IDE antibody) at dilution of 1:500 incubated at room temperature for 1.5 hours.



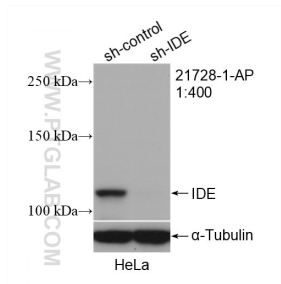
Immunohistochemical analysis of paraffin-embedded human kidney using 21728-1-AP (IDE antibody) at dilution of 1:50 (under 10x lens).



Immunohistochemical analysis of paraffin-embedded human kidney using 21728-1-AP (IDE antibody) at dilution of 1:50 (under 40x lens).



IP result of anti-IDE (IP:21728-1-AP, 4ug; Detection:21728-1-AP 1:500) with HepG2 cells lysate 1600ug.



WB result of IDE antibody (21728-1-AP; 1:400; incubated at room temperature for 1.5 hours) with sh-Control and sh-IDE transfected HeLa cells.