

For Research Use Only

KANK2 Polyclonal antibody

Catalog Number: 21733-1-AP

4 Publications



Basic Information

Catalog Number:

21733-1-AP

Size:

150ul, Concentration: 500 ug/ml by Nanodrop and 460 ug/ml by Bradford method using BSA as the standard;

Source:

Rabbit

Isotype:

IgG

Immunogen Catalog Number:

AG16416

GenBank Accession Number:

BC098105

GeneID (NCBI):

25959

UNIPROT ID:

Q63ZY3

Full Name:

KN motif and ankyrin repeat domains

2

Calculated MW:

851 aa, 91 kDa

Observed MW:

95-100 kDa

Purification Method:

Antigen affinity purification

Recommended Dilutions:

WB 1:500-1:3000

IHC 1:50-1:500

IF/ICC 1:50-1:500

Applications

Tested Applications:

WB, IHC, IF/ICC, ELISA

Cited Applications:

WB, IF

Species Specificity:

human, mouse, rat

Cited Species:

human, mouse

Note-IHC: suggested antigen retrieval with TE buffer pH 9.0; (*) Alternatively, antigen retrieval may be performed with citrate buffer pH 6.0

Positive Controls:

WB: mouse heart tissue, mouse kidney tissue, Transfected HEK-293 cells, mouse lung tissue

IHC: human kidney tissue,

IF/ICC: HepG2 cells, A549 cells

Background Information

Involved in transcription regulation by sequestering nuclear receptor coactivators, such as NCOA1, NCOA2 and NCOA3, in the cytoplasm; the function is deregulated by phosphorylation. May be involved in the control of cytoskeleton formation by regulating actin polymerization. Involved in regulation of caspase-independent apoptosis; proposed to sequester AIFM1 in mitochondria and apoptotic stimuli lead to its proteasomal degradation allowing the release of AIFM1 to the nucleus. May be involved in promotion of cell proliferation.

Notable Publications

Author	Pubmed ID	Journal	Application
Pantipa Tonsawan	31553647	Am J Physiol Cell Physiol	WB
Yuqun Xu	34274317	J Biol Chem	WB
Li Liu	37927241	Am J Physiol Cell Physiol	WB

Storage

Storage:

Store at -20°C. Stable for one year after shipment.

Storage Buffer:

PBS with 0.02% sodium azide and 50% glycerol pH 7.3.

Aliquoting is unnecessary for -20°C storage

*** 20ul sizes contain 0.1% BSA

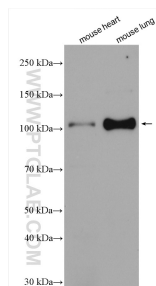
For technical support and original validation data for this product please contact:

T: 1 (888) 4PTGLAB (1-888-478-4522) (toll free in USA), or 1(312) 455-8498 (outside USA)

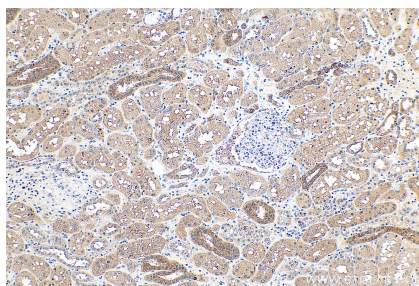
E: proteintech@ptglab.com
W: ptglab.com

This product is exclusively available under Proteintech Group brand and is not available to purchase from any other manufacturer.

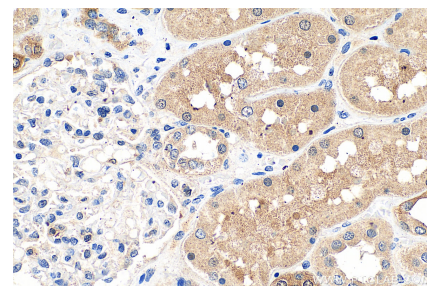
Selected Validation Data



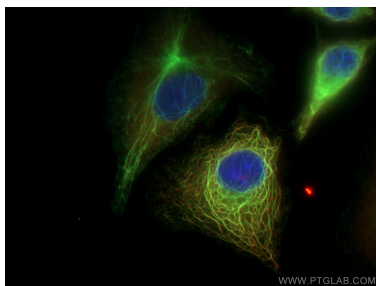
Various lysates were subjected to SDS PAGE followed by western blot with 21733-1-AP (KANK2 antibody) at dilution of 1:1500 incubated at room temperature for 1.5 hours.



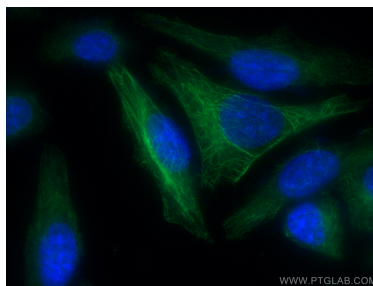
Immunohistochemical analysis of paraffin-embedded human kidney tissue slide using 21733-1-AP (KANK2 antibody) at dilution of 1:200 (under 10x lens). Heat mediated antigen retrieval with Tris-EDTA buffer (pH 9.0).



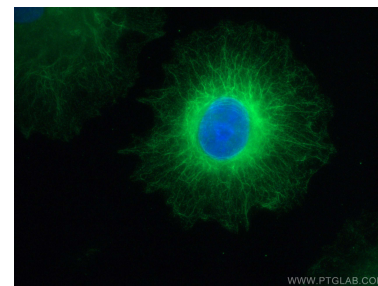
Immunohistochemical analysis of paraffin-embedded human kidney tissue slide using 21733-1-AP (KANK2 antibody) at dilution of 1:200 (under 40x lens). Heat mediated antigen retrieval with Tris-EDTA buffer (pH 9.0).



Immunofluorescent analysis of (-20°C Methanol) fixed A549 cells using KANK2 antibody (21733-1-AP) at dilution of 1:400 and CoraLite®488-Conjugated AffiniPure Goat Anti-Rabbit IgG(H+L), CoraLite®594 B23/NPM1 antibody (CL594-60096, Clone: 4F12A3, red).



Immunofluorescent analysis of (-20°C Methanol) fixed HepG2 cells using KANK2 antibody (21733-1-AP) at dilution of 1:200 and CoraLite®488-Conjugated AffiniPure Goat Anti-Rabbit IgG(H+L).



Immunofluorescent analysis of (-20°C Methanol) fixed A549 cells using KANK2 antibody (21733-1-AP) at dilution of 1:400 and CoraLite®488-Conjugated AffiniPure Goat Anti-Rabbit IgG(H+L).