

For Research Use Only

CARD11 Polyclonal antibody

Catalog Number: 21741-1-AP

4 Publications



Basic Information

Catalog Number: 21741-1-AP	GenBank Accession Number: BC111719	Purification Method: Antigen affinity purification
Size: 150ul, Concentration: 500 ug/ml by Nanodrop;	GeneID (NCBI): 84433	Recommended Dilutions: WB 1:500-1:1000
Source: Rabbit	UNIPROT ID: Q9BXL7	IHC 1:50-1:500
Isotype: IgG	Full Name: caspase recruitment domain family, member 11	IF/ICC 1:50-1:500
Immunogen Catalog Number: AG16468	Calculated MW: 1154 aa, 133 kDa	
	Observed MW: 133 kDa	

Applications

Tested Applications: WB, IHC, IF/ICC, ELISA	Positive Controls:
Cited Applications: WB, IF	WB: Raji cells, mouse thymus tissue
Species Specificity: human, mouse, rat	IHC: human colon cancer tissue, human lymphoma tissue
Cited Species: human, mouse	IF/ICC: L02 cells,
Note-IHC: suggested antigen retrieval with TE buffer pH 9.0; (*) Alternatively, antigen retrieval may be performed with citrate buffer pH 6.0	

Background Information

CARD11 also named as BIMP3 or CARMA1, is a 1154 amino acid protein, which contains one PDZ domain, one guanylate kinase-like domain, and one CARD domain. CARD11 localizes in the cytoplasm and co-localized with DPP4 in membrane raft. CARD11 is detected in adult peripheral blood leukocytes, thymus, spleen and liver. CARD11 also is found in CARD11 promyelocytic leukemia HL-60 cells, chronic myelogenous leukemia K-562 cells, Burkitt's lymphoma Raji cells and colorectal adenocarcinoma SW480 cells. CARD11 is involved in the co-stimulatory signal essential for T-cell receptor mediated T-cell activation.

Notable Publications

Author	Pubmed ID	Journal	Application
Peiwei Zhao	36203613	Front Immunol	WB, IF
Peiwei Zhao	34557185	Front Immunol	WB, IF
Peiwei Zhao	39414811	Sci Rep	WB

Storage

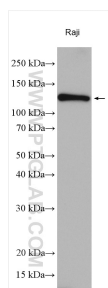
Storage:
Store at -20°C. Stable for one year after shipment.
Storage Buffer:
PBS with 0.02% sodium azide and 50% glycerol
Aliquoting is unnecessary for -20°C storage

*** 20ul sizes contain 0.1% BSA

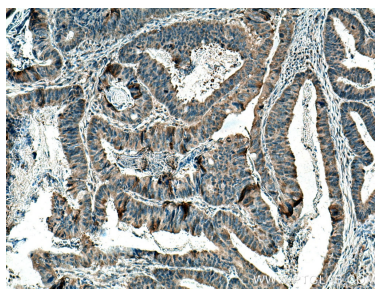
For technical support and original validation data for this product please contact:
T: 1 (888) 4PTGLAB (1-888-478-4522) (toll free in USA), or 1(312) 455-8498 (outside USA)
E: proteintech@ptglab.com
W: ptglab.com

This product is exclusively available under Proteintech Group brand and is not available to purchase from any other manufacturer.

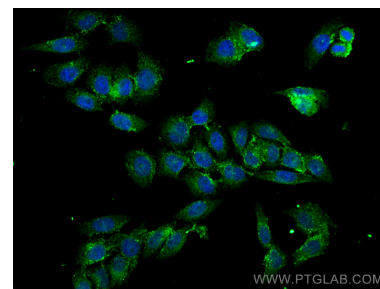
Selected Validation Data



Raji cells were subjected to SDS PAGE followed by western blot with 21741-1-AP (CARD11 antibody) at dilution of 1:800 incubated at room temperature for 1.5 hours.



Immunohistochemical analysis of paraffin-embedded human colon cancer tissue slide using 21741-1-AP (CARD11 antibody) at dilution of 1:200 (under 10x lens). Heat mediated antigen retrieval with Tris-EDTA buffer (pH 9.0).



Immunofluorescent analysis of (4% PFA) fixed L02 cells using CARD11 antibody (21741-1-AP) at dilution of 1:200 and CoraLite®488-Conjugated AffiniPure Goat Anti-Rabbit IgG(H+L).