

For Research Use Only

RAPGEFL1 Polyclonal antibody

Catalog Number: 21746-1-AP



Basic Information

Catalog Number:

21746-1-AP

Size:

150ul , Concentration: 450 ug/ml by Nanodrop and 287 ug/ml by Bradford method using BSA as the standard;

Source:

Rabbit

Isotype:

IgG

Immunogen Catalog Number:

AG16506

GenBank Accession Number:

BC115374

GeneID (NCBI):

51195

UNIPROT ID:

Q9UHV5

Full Name:

Rap guanine nucleotide exchange factor (GEF)-like 1

Calculated MW:

662 aa, 73 kDa

Observed MW:

73 kDa, 59 kDa

Purification Method:

Antigen affinity purification

Recommended Dilutions:

WB 1:500-1:2400

IF/ICC 1:10-1:100

Applications

Tested Applications:

WB, IF/ICC, ELISA

Species Specificity:

human, mouse, rat

Positive Controls:

WB : human brain tissue, mouse kidney tissue

IF/ICC : HepG2 cells,

Storage

Storage:

Store at -20°C. Stable for one year after shipment.

Storage Buffer:

PBS with 0.02% sodium azide and 50% glycerol pH 7.3.

Aliquoting is unnecessary for -20°C storage

*** 20ul sizes contain 0.1% BSA

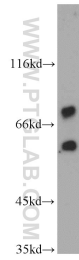
For technical support and original validation data for this product please contact:

T: 1 (888) 4PTGLAB (1-888-478-4522) (toll free in USA), or 1(312) 455-8498 (outside USA)

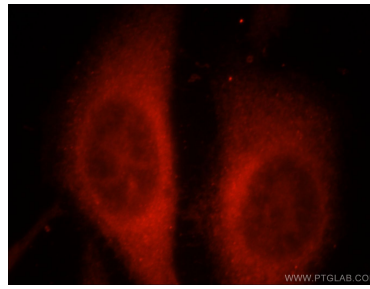
E: proteintech@ptglab.com
W: ptglab.com

This product is exclusively available under Proteintech Group brand and is not available to purchase from any other manufacturer.

Selected Validation Data



human brain tissue were subjected to SDS PAGE followed by western blot with 21746-1-AP (RAPGEFL1 antibody) at dilution of 1:500 incubated at room temperature for 1.5 hours.



Immunofluorescent analysis of HepG2 cells, using RAPGEFL1 antibody 21746-1-AP at 1:25 dilution and Rhodamine-labeled goat anti-rabbit IgG (red).