

# APC1 Polyclonal antibody

Catalog Number: 21748-1-AP

4 Publications

## Basic Information

<b>Catalog Number:</b> 21748-1-AP	<b>GenBank Accession Number:</b> BC104902	<b>Purification Method:</b> Antigen affinity purification
<b>Size:</b> 150ul , Concentration: 550 µg/ml by Nanodrop and 387 µg/ml by Bradford method using BSA as the standard;	<b>GeneID (NCBI):</b> 64682	<b>Recommended Dilutions:</b> WB 1:1000-1:4000 IHC 1:20-1:200
<b>Source:</b> Rabbit	<b>Full Name:</b> anaphase promoting complex subunit 1	
<b>Isotype:</b> IgG	<b>Calculated MW:</b> 1944 aa, 217 kDa	
<b>Immunogen Catalog Number:</b> AG13399	<b>Observed MW:</b> 200-210 kDa	

## Applications

<b>Tested Applications:</b> IHC, WB, ELISA	<b>Positive Controls:</b>
<b>Cited Applications:</b> WB	<b>WB :</b> HeLa cells, HEK-293 cells, HT-1080 cells, K-562 cells, mouse brain tissue, Transfected HEK-293 cells
<b>Species Specificity:</b> human, mouse, rat	<b>IHC :</b> human testis tissue, human cervical cancer tissue, human stomach tissue
<b>Cited Species:</b> human	

**Note-IHC: suggested antigen retrieval with TE buffer pH 9.0; (\*) Alternatively, antigen retrieval may be performed with citrate buffer pH 6.0**

## Background Information

### Notable Publications

Author	Pubmed ID	Journal	Application
Jianguo Yang	33691114	Cell Rep	WB
Helin Wang	34244565	Sci Rep	WB
Jin Zhu	26540468	Oncotarget	WB

## Storage

**Storage:**  
Store at -20°C. Stable for one year after shipment.  
**Storage Buffer:**  
PBS with 0.02% sodium azide and 50% glycerol pH 7.3.  
Aliquoting is unnecessary for -20°C storage

\*\*\* 20ul sizes contain 0.1% BSA

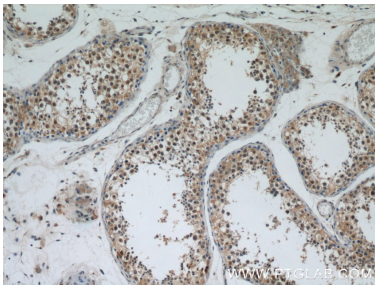
For technical support and original validation data for this product please contact:  
T: 1 (888) 4PTGLAB (1-888-478-4522) (toll free in USA), or 1(312) 455-8498 (outside USA)  
E: [proteintech@ptglab.com](mailto:proteintech@ptglab.com)  
W: [ptglab.com](http://ptglab.com)

This product is exclusively available under Proteintech Group brand and is not available to purchase from any other manufacturer.

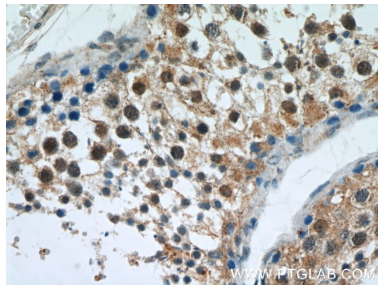
# Selected Validation Data



HeLa cells were subjected to SDS PAGE followed by western blot with 21748-1-AP (APC1 antibody) at dilution of 1:1500 incubated at room temperature for 1.5 hours.



Immunohistochemical analysis of paraffin-embedded human testis using 21748-1-AP (APC1 antibody) at dilution of 1:50 (under 10x lens).



Immunohistochemical analysis of paraffin-embedded human testis using 21748-1-AP (APC1 antibody) at dilution of 1:50 (under 40x lens).