

For Research Use Only

PURG Polyclonal antibody

Catalog Number: 21750-1-AP



Basic Information

| | | |
|---|--|--|
| Catalog Number: 21750-1-AP | GenBank Accession Number: BC106708 | Purification Method: Antigen affinity purification |
| Size: 150ul , Concentration: 300 µg/ml by Nanodrop; | GeneID (NCBI): 29942 | Recommended Dilutions: WB 1:500-1:2000 |
| Source: Rabbit | Full Name: purine-rich element binding protein G | |
| Isotype: IgG | Calculated MW: 347 aa, 40 kDa | |
| Immunogen Catalog Number: AG15820 | Observed MW: 36-40 kDa | |

Applications

| | |
|--|---|
| Tested Applications: WB, ELISA | Positive Controls: WB : HeLa cells, |
| Species Specificity: human, mouse, rat | |

Background Information

Storage

Storage:
Store at -20°C. Stable for one year after shipment.
Storage Buffer:
PBS with 0.02% sodium azide and 50% glycerol pH 7.3.
Aliquoting is unnecessary for -20°C storage

*** 20ul sizes contain 0.1% BSA

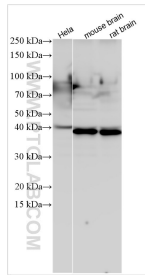
For technical support and original validation data for this product please contact:

T: 1 (888) 4PTGLAB (1-888-478-4522) (toll free in USA), or 1(312) 455-8498 (outside USA)

E: proteintech@ptglab.com
W: ptglab.com

This product is exclusively available under Proteintech Group brand and is not available to purchase from any other manufacturer.

Selected Validation Data



Various lysates were subjected to SDS PAGE followed by western blot with 21750-1-AP (PURG antibody) at dilution of 1:1000 incubated at room temperature for 1.5 hours.