

For Research Use Only

PDE4C Polyclonal antibody

Catalog Number: 21754-1-AP

7 Publications



Basic Information

Catalog Number:

21754-1-AP

Size:

150ul, Concentration: 300 ug/ml by Nanodrop;

Source:

Rabbit

Isotype:

IgG

Immunogen Catalog Number:

AG16130

GenBank Accession Number:

BC109067

GeneID (NCBI):

5143

UNIPROT ID:

Q08493

Full Name:

phosphodiesterase 4C, cAMP-specific (phosphodiesterase E1 duncce homolog, Drosophila)

Calculated MW:

712 aa, 80 kDa

Observed MW:

~70 kDa

Purification Method:

Antigen affinity purification

Recommended Dilutions:

WB 1:200-1:1000

Applications

Tested Applications:

WB, ELISA

Cited Applications:

WB, IHC

Species Specificity:

human, mouse

Cited Species:

human, mouse

Positive Controls:

WB: HEK-293 cells, mouse lung tissue

Background Information

PDE4C (cAMP-specific 3,5-cyclic phosphodiesterase 4C) is also named as DPDE1 and belongs to the PDE4 subfamily, which play a key role in lung inflammation and hyperresponsiveness. PDE4C promotes the hydrolysis of cAMP, and PKD2, functioning as a Ca²⁺ entry channel, may mediate local accumulation of Ca²⁺ that inhibits the activity of Ca²⁺-sensitive ADCY5 (PMID:21670265). The three isoforms (84, 75, and 64 kDa) of PDE4C have been detected in cytosolic, microsomal, and nuclear (PMID:21784969).

Notable Publications

Author	Pubmed ID	Journal	Application
Matthew Riopel	32534258	Mol Metab	WB
Man Xu	31961716	Am J Physiol Renal Physiol	WB
Heng Li	32251674	Biochem Pharmacol	WB

Storage

Storage:

Store at -20°C. Stable for one year after shipment.

Storage Buffer:

PBS with 0.02% sodium azide and 50% glycerol pH 7.3.

Aliquoting is unnecessary for -20°C storage

*** 20ul sizes contain 0.1% BSA

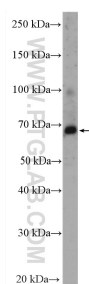
For technical support and original validation data for this product please contact:

T: 1 (888) 4PTGLAB (1-888-478-4522) (toll free in USA), or 1(312) 455-8498 (outside USA)

E: proteintech@ptglab.com
W: ptglab.com

This product is exclusively available under Proteintech Group brand and is not available to purchase from any other manufacturer.

Selected Validation Data



HEK-293 cells were subjected to SDS PAGE followed by western blot with 21754-1-AP (PDE4C antibody) at dilution of 1:300 incubated at room temperature for 1.5 hours.