

For Research Use Only

HSPB2 Polyclonal antibody

Catalog Number: 21755-1-AP **2 Publications**



Basic Information

Catalog Number: 21755-1-AP	GenBank Accession Number: BC109393	Purification Method: Antigen affinity purification
Size: 150ul , Concentration: 200 µg/ml by Nanodrop and 200 µg/ml by Bradford method using BSA as the standard;	GeneID (NCBI): 3316	Recommended Dilutions: WB 1:500-1:1000 IHC 1:20-1:200 IF 1:10-1:100
Source: Rabbit	Full Name: heat shock 27kDa protein 2	
Isotype: IgG	Calculated MW: 182 aa, 20 kDa	
Immunogen Catalog Number: AG16146	Observed MW: 20-25 kDa	

Applications

Tested Applications: IF, IHC, WB, ELISA	Positive Controls:
Cited Applications: IHC, WB	WB: human skeletal muscle tissue, rat heart tissue
Species Specificity: human, rat	IHC: human heart tissue, human skeletal muscle tissue
Cited Species: human	IF: HepG2 cells,

Note-IHC: suggested antigen retrieval with TE buffer pH 9.0; (*) Alternatively, antigen retrieval may be performed with citrate buffer pH 6.0

Background Information

Notable Publications

Author	Pubmed ID	Journal	Application
An-An Yin	31088577	Clin Epigenetics	WB, IHC
Weifang Yu	35154459	J Cancer	WB

Storage

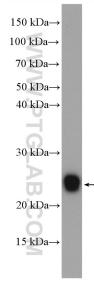
Storage:
Store at -20°C. Stable for one year after shipment.
Storage Buffer:
PBS with 0.02% sodium azide and 50% glycerol pH 7.3.
Aliquoting is unnecessary for -20°C storage

***** 20ul sizes contain 0.1% BSA**

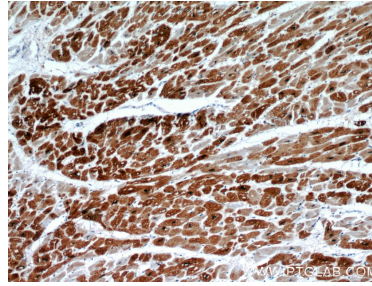
For technical support and original validation data for this product please contact:
T: 1 (888) 4PTGLAB (1-888-478-4522) (toll free in USA), or 1(312) 455-8498 (outside USA)
E: proteintech@ptglab.com
W: ptglab.com

This product is exclusively available under Proteintech Group brand and is not available to purchase from any other manufacturer.

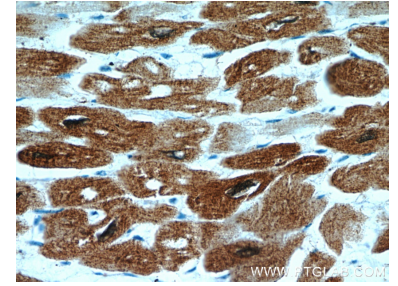
Selected Validation Data



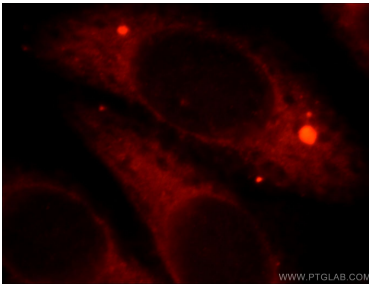
human skeletal muscle tissue were subjected to SDS PAGE followed by western blot with 21755-1-AP (HSPB2 antibody) at dilution of 1:500 incubated at 4 degree celsius over night.



Immunohistochemical analysis of paraffin-embedded human heart using 21755-1-AP (HSPB2 antibody) at dilution of 1:50 (under 10x lens).



Immunohistochemical analysis of paraffin-embedded human heart using 21755-1-AP (HSPB2 antibody) at dilution of 1:50 (under 40x lens).



Immunofluorescent analysis of HepG2 cells, using HSPB2 antibody 21755-1-AP at 1:25 dilution and Rhodamine-labeled goat anti-rabbit IgG (red).