

For Research Use Only

# SLC25A2 Polyclonal antibody

Catalog Number: 21764-1-AP **1 Publications**



## Basic Information

<b>Catalog Number:</b> 21764-1-AP	<b>GenBank Accession Number:</b> BC100935	<b>Purification Method:</b> Antigen affinity purification
<b>Size:</b> 150ul, Concentration: 293 µg/ml by Bradford method using BSA as the standard;	<b>GeneID (NCBI):</b> 83884	<b>Recommended Dilutions:</b> WB 1:500-1:3000 IHC 1:20-1:200
<b>Source:</b> Rabbit	<b>Full Name:</b> solute carrier family 25 (mitochondrial carrier; ornithine transporter) member 2	
<b>Isotype:</b> IgG	<b>Calculated MW:</b> 301 aa, 33 kDa	
<b>Immunogen Catalog Number:</b> AG16360	<b>Observed MW:</b> 30-33 kDa	

## Applications

<b>Tested Applications:</b> IHC, WB, ELISA	<b>Positive Controls:</b>
<b>Cited Applications:</b> WB	<b>WB:</b> mouse kidney tissue, HeLa cells, mouse liver tissue
<b>Species Specificity:</b> human, mouse, rat	<b>IHC:</b> human liver tissue, human kidney tissue
<b>Cited Species:</b> human	

**Note-IHC: suggested antigen retrieval with TE buffer pH 9.0; (\*) Alternatively, antigen retrieval may be performed with citrate buffer pH 6.0**

## Background Information

### Notable Publications

Author	Pubmed ID	Journal	Application
Dan Nakano	32343721	PLoS One	WB

## Storage

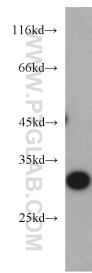
**Storage:**  
Store at -20°C. Stable for one year after shipment.  
**Storage Buffer:**  
PBS with 0.02% sodium azide and 50% glycerol pH 7.3.  
Aliquoting is unnecessary for -20°C storage

\*\*\* 20ul sizes contain 0.1% BSA

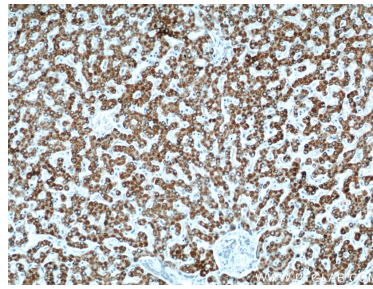
For technical support and original validation data for this product please contact:  
T: 1 (888) 4PTGLAB (1-888-478-4522) (toll free in USA), or 1(312) 455-8498 (outside USA)  
E: proteintech@ptglab.com  
W: ptglab.com

This product is exclusively available under Proteintech Group brand and is not available to purchase from any other manufacturer.

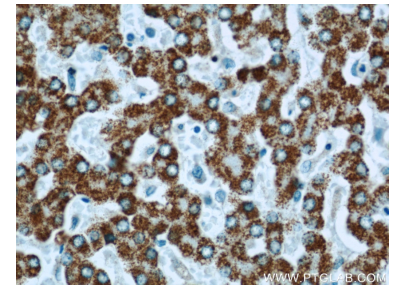
## Selected Validation Data



mouse kidney tissue were subjected to SDS PAGE followed by western blot with 21764-1-AP (SLC25A2 antibody) at dilution of 1:500 incubated at room temperature for 1.5 hours.



Immunohistochemical analysis of paraffin-embedded human liver using 21764-1-AP (SLC25A2 antibody) at dilution of 1:50 (under 10x lens).



Immunohistochemical analysis of paraffin-embedded human liver using 21764-1-AP (SLC25A2 antibody) at dilution of 1:50 (under 40x lens).