

For Research Use Only

# LCE1B Polyclonal antibody

Catalog Number: 21771-1-AP



## Basic Information

<b>Catalog Number:</b> 21771-1-AP	<b>GenBank Accession Number:</b> BC104232	<b>Purification Method:</b> Antigen affinity purification
<b>Size:</b> 150ul , Concentration: 400 ug/ml by Nanodrop and 240 ug/ml by Bradford method using BSA as the standard;	<b>GeneID (NCBI):</b> 353132	<b>Recommended Dilutions:</b> WB 1:500-1:2000
<b>Source:</b> Rabbit	<b>UNIPROT ID:</b> Q5T7P3	<b>IHC 1:20-1:200</b>
<b>Isotype:</b> IgG	<b>Full Name:</b> late cornified envelope 1B	<b>IF/ICC 1:200-1:800</b>
<b>Immunogen Catalog Number:</b> AG16442	<b>Calculated MW:</b> 118 aa, 12 kDa	
	<b>Observed MW:</b> 10-12 kDa	

## Applications

**Tested Applications:**  
WB, IHC, IF/ICC, ELISA

**Species Specificity:**  
human, mouse, rat

**Note-IHC: suggested antigen retrieval with TE buffer pH 9.0; (\*) Alternatively, antigen retrieval may be performed with citrate buffer pH 6.0**

**Positive Controls:**

**WB :** A375 cells, mouse skin tissue, rat skin tissue

**IHC :** human skin tissue, human oesophagus tissue

**IF/ICC :** A375 cells,

## Background Information

Human LCE1B (Late cornified envelope protein 1B), also named late envelope protein 2 (LEP2), is located at human Chromosome1q21 which contains multiple LCE clusters. LCE1B gene is predicated to encode a 118-aa protein, and is currently evidenced at transcript level. Its expression was skin-specific and was readily detected in adult trunk skin, adult arm skin, fetal skin, penial skin, vulva, esophagus and tongue (PMID: 15854049). LCE genes respond to environmental stimuli such as calcium levels and ultraviolet (UV) light, however, LCE groups have distinct functions (PMID: 15854049).

## Storage

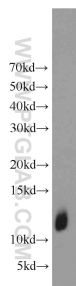
**Storage:**  
Store at -20°C. Stable for one year after shipment.  
**Storage Buffer:**  
PBS with 0.02% sodium azide and 50% glycerol pH 7.3.  
**Aliquoting is unnecessary for -20°C storage**

**\*\*\* 20ul sizes contain 0.1% BSA**

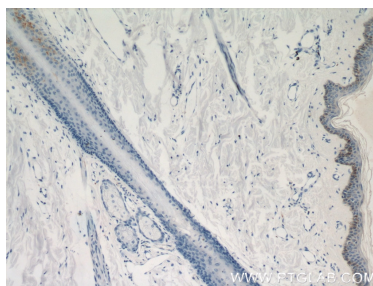
For technical support and original validation data for this product please contact:  
T: 1 (888) 4PTGLAB (1-888-478-4522) (toll free in USA), or 1(312) 455-8498 (outside USA)  
E: [proteintech@ptglab.com](mailto:proteintech@ptglab.com)  
W: [ptglab.com](http://ptglab.com)

This product is exclusively available under Proteintech Group brand and is not available to purchase from any other manufacturer.

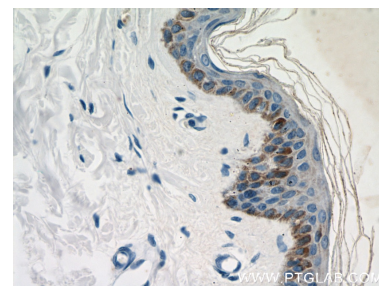
## Selected Validation Data



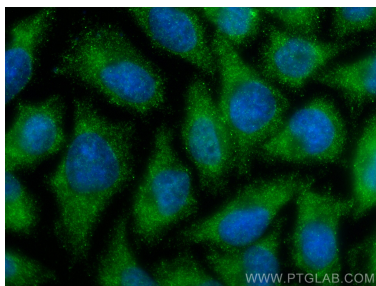
A375 cells were subjected to SDS PAGE followed by western blot with 21771-1-AP (LCE1B antibody) at dilution of 1:1000 incubated at room temperature for 1.5 hours.



Immunohistochemical analysis of paraffin-embedded human skin using 21771-1-AP (LCE1B antibody) at dilution of 1:50 (under 10x lens).



Immunohistochemical analysis of paraffin-embedded human skin using 21771-1-AP (LCE1B antibody) at dilution of 1:50 (under 40x lens).



Immunofluorescent analysis of (-20°C Ethanol) fixed A375 cells using LCE1B antibody (21771-1-AP) at dilution of 1:400 and CoraLite®488-Conjugated Goat Anti-Rabbit IgG(H+L) (SA00013-2).